



Condition of the College Data Overview

College of Micronesia - FSM

President's Retreat

September 22 – 24, 2010

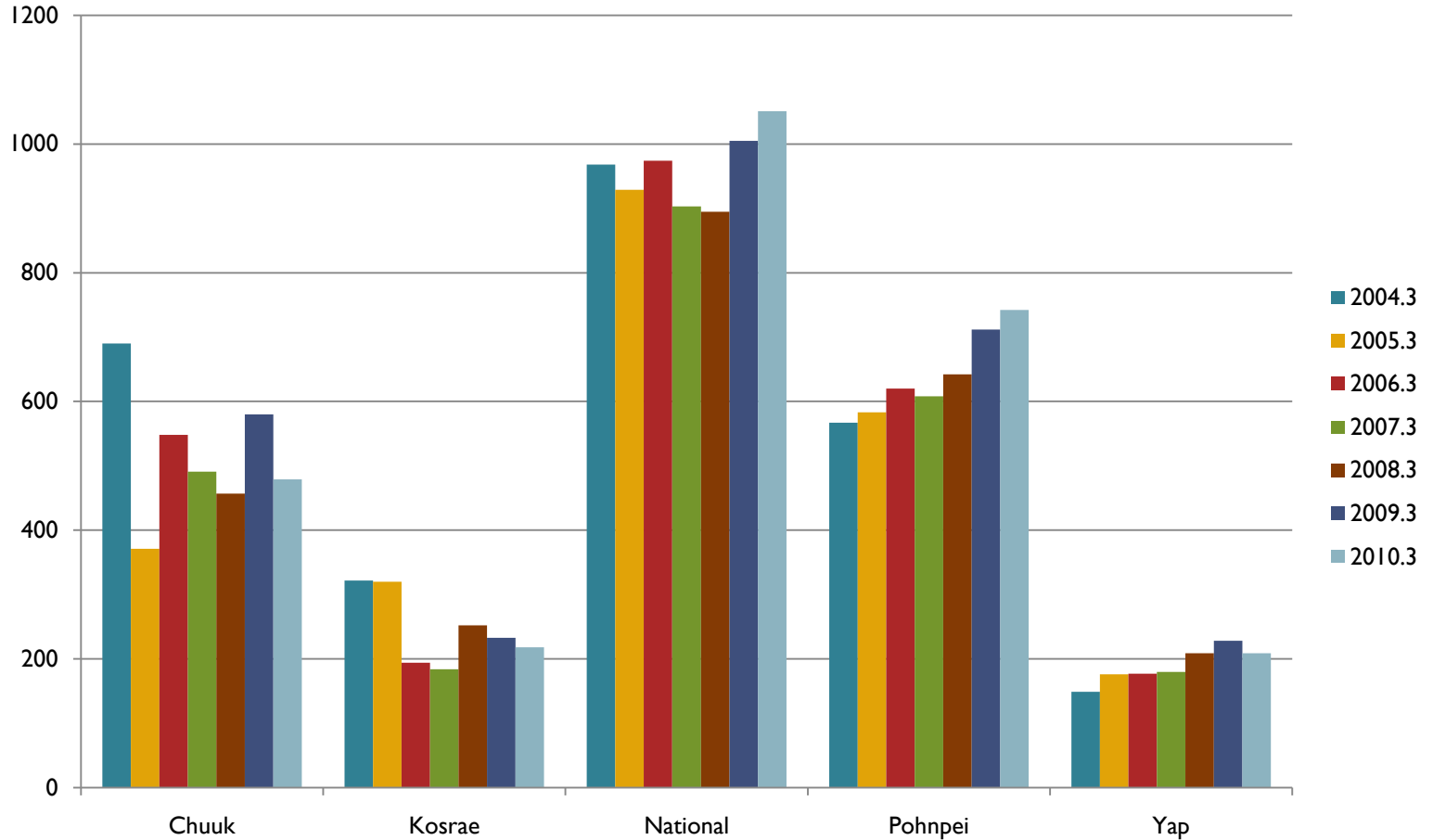
Fall Semesters 2004 - 2010



TRENDS IN ENROLLMENT & STUDENT ACHIEVEMENT

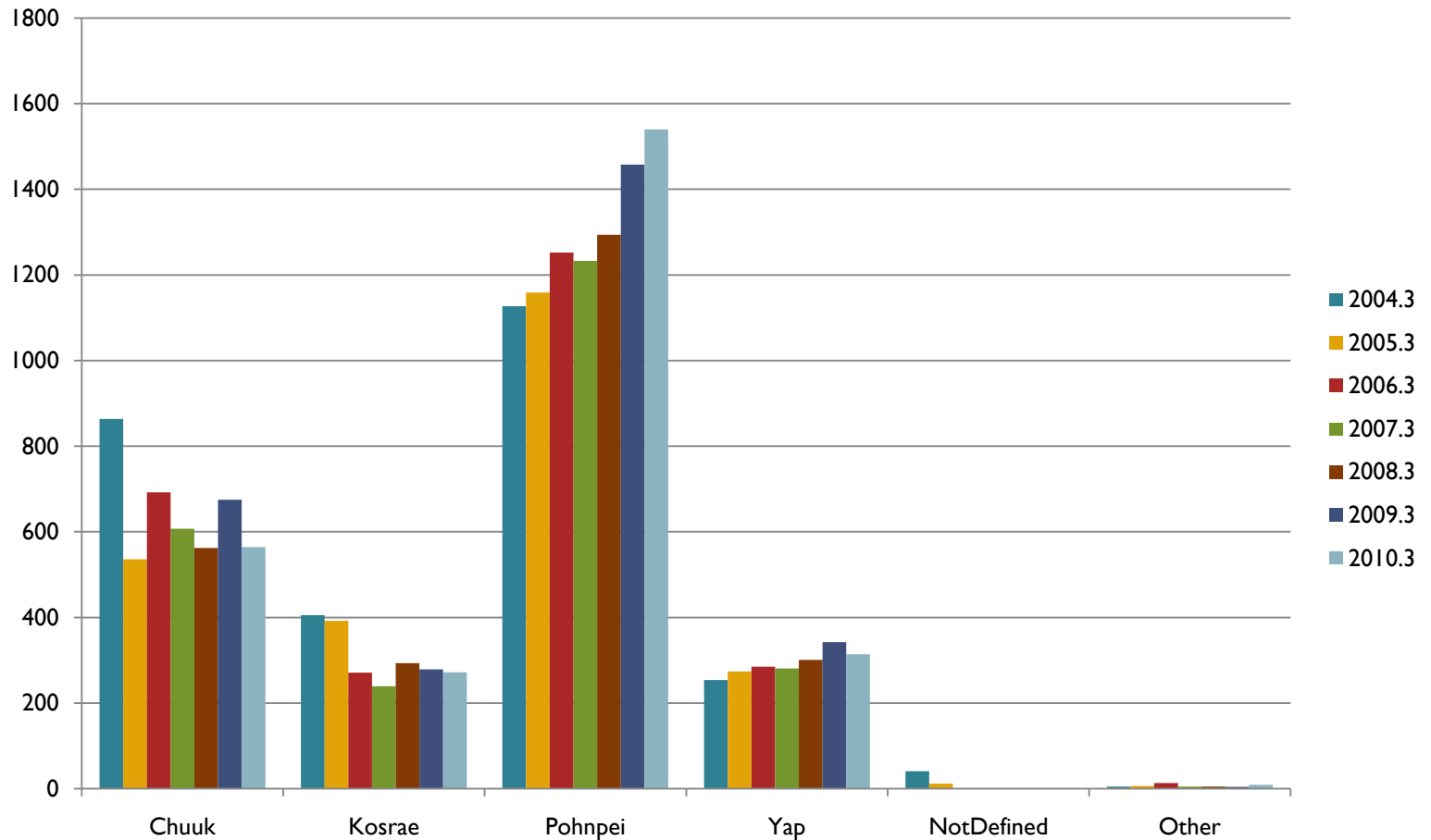
Enrollment by Campus Fall Semesters

Fall Semesters 2004 - 2010 Enrollment (Headcount) by Campus



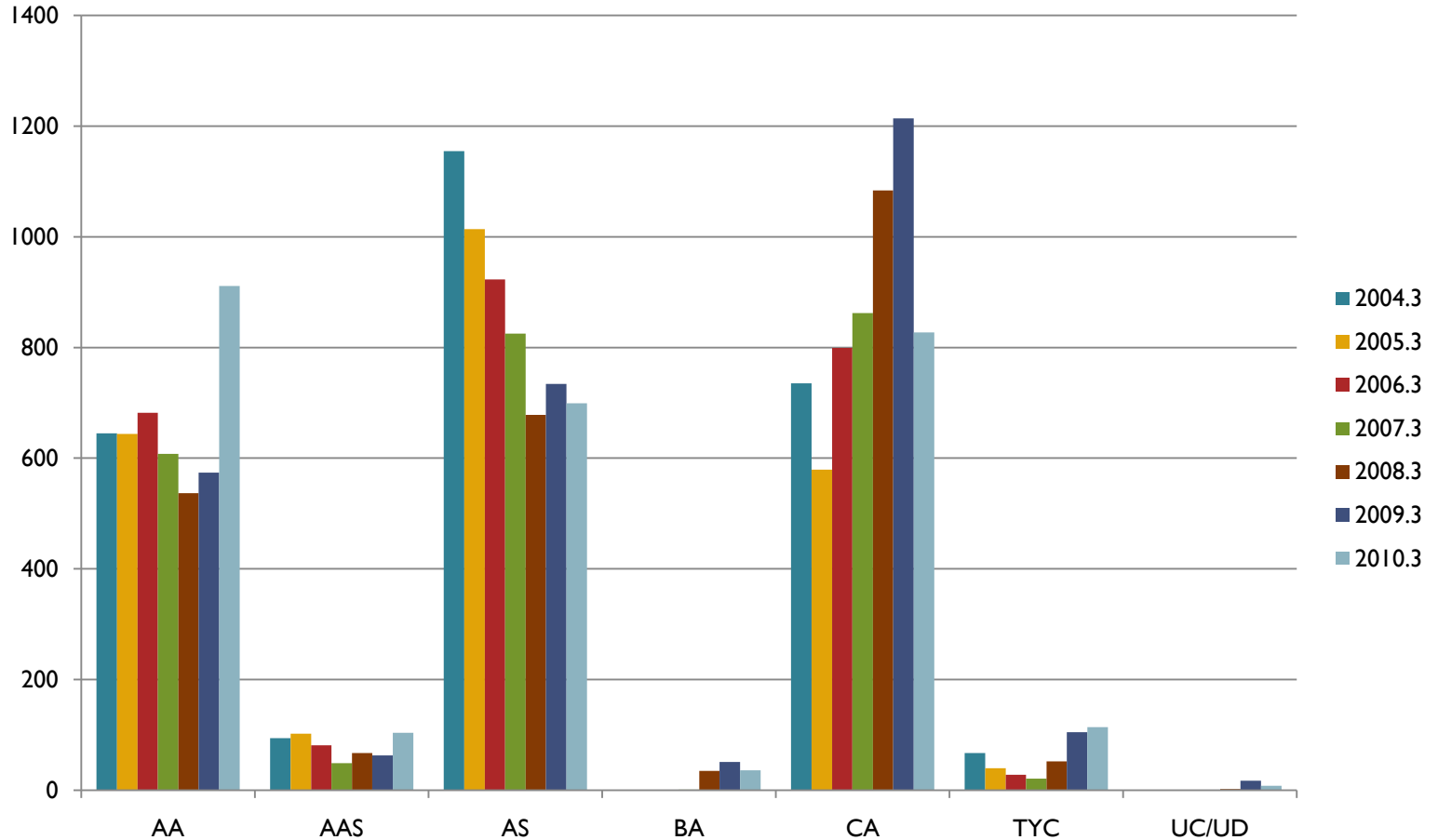
Trends Enrollment by State Origin

Fall Semesters 2004 - 2010 Enrollment by State of Origin



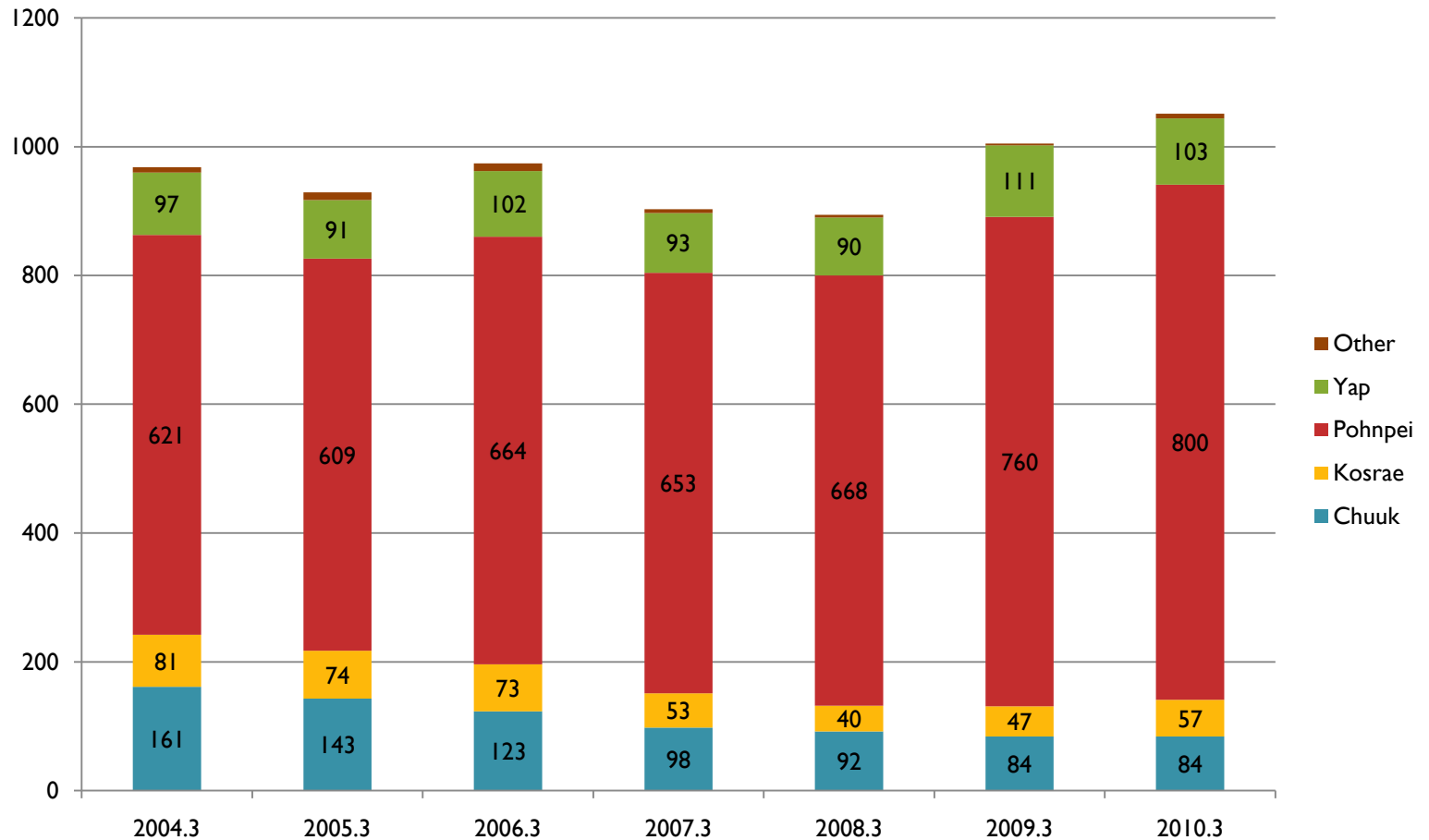
Enrollment by Degree Fall Semesters

Fall Semesters 2004 - 2010 Enrollment by Degree Type



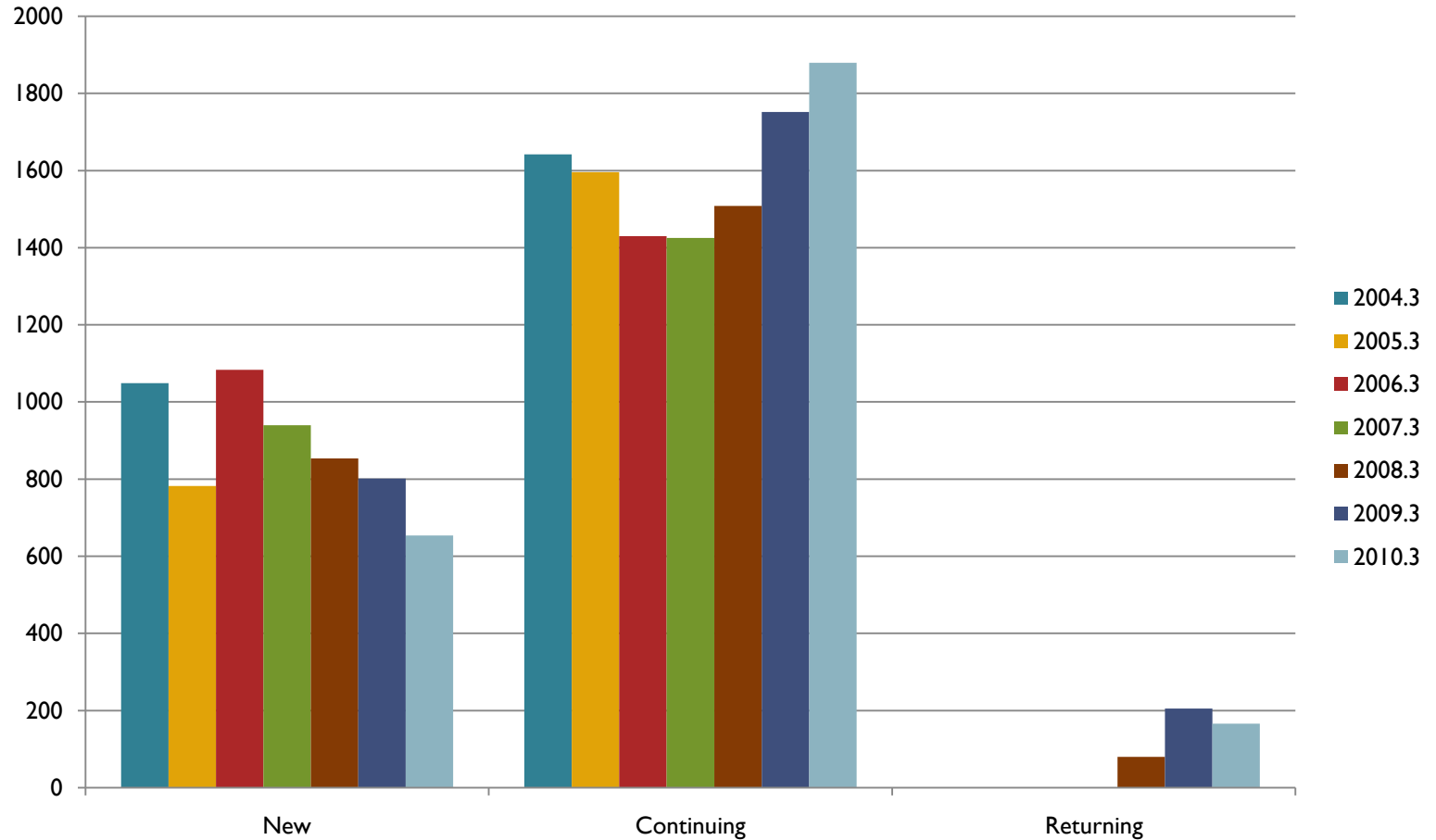
Trends Enrollment National Campus by State of Origin

Fall Semesters Enrollment National Campus by State of Origin



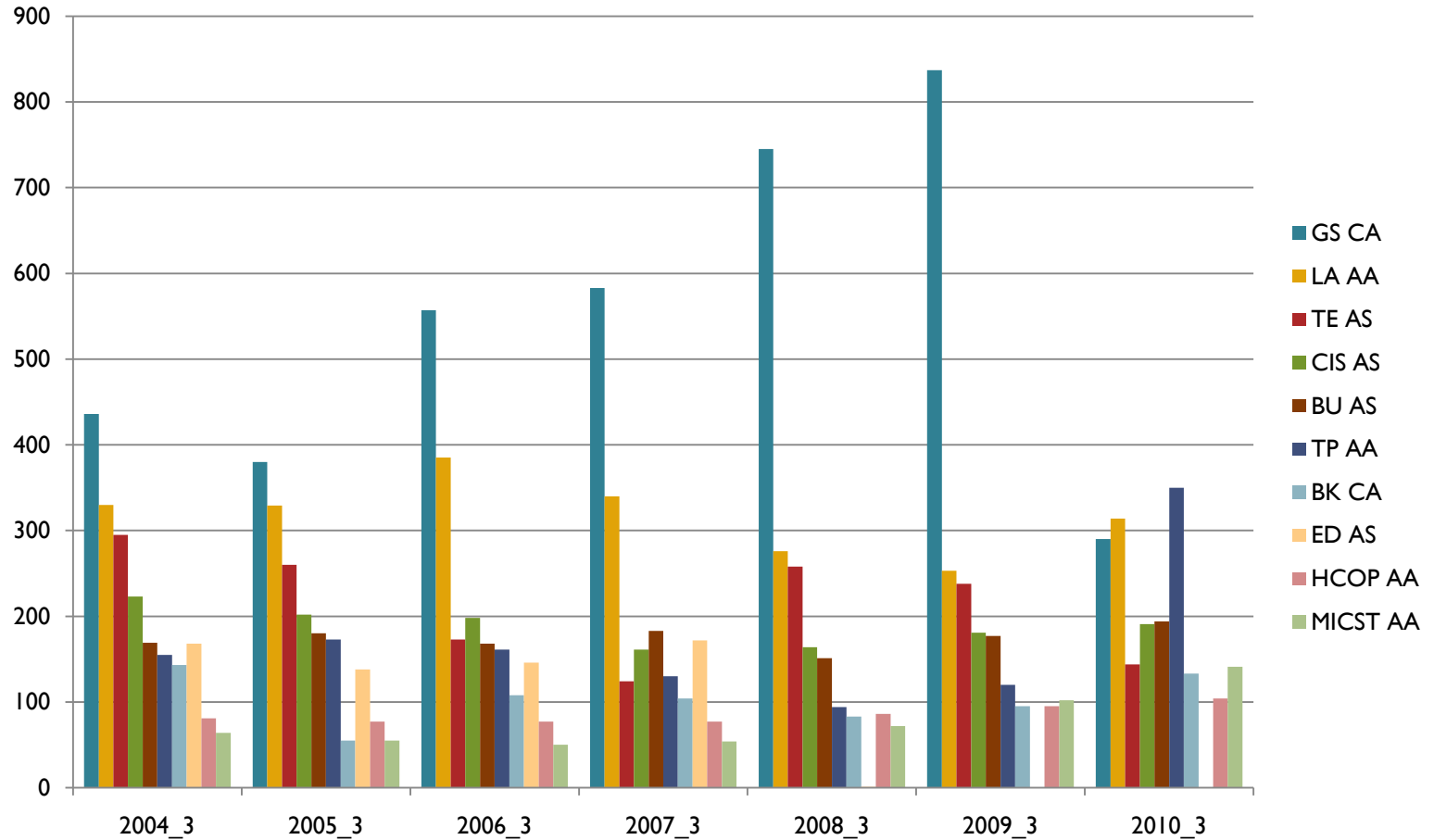
Trends Enrollment by Student Type

Fall Semester 2004 - 2010 Enrollment by Student Type



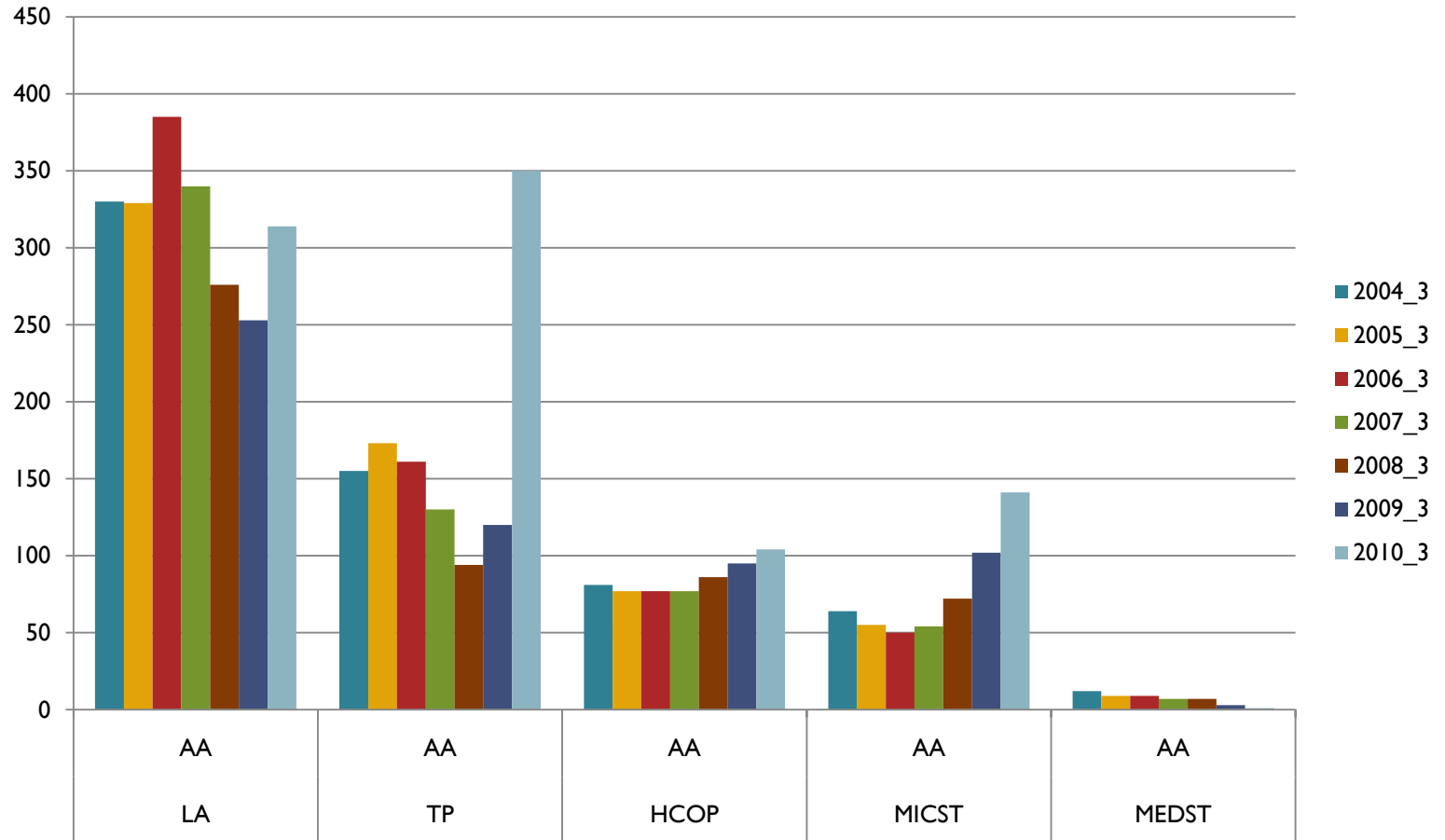
10 Largest Programs 2004 - 10

10 Largest Programs



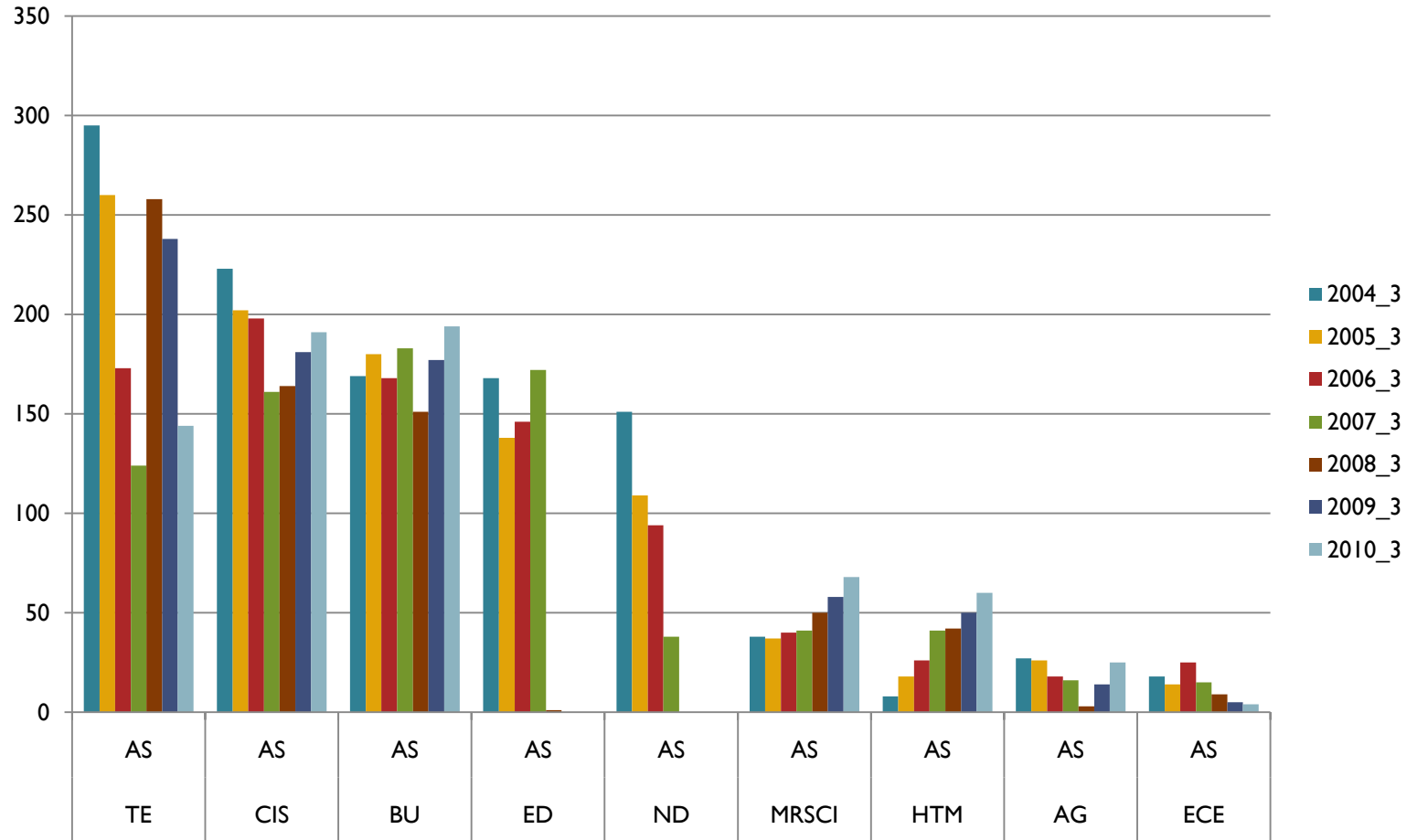
Trends AA Degree Programs

AA Degree Programs



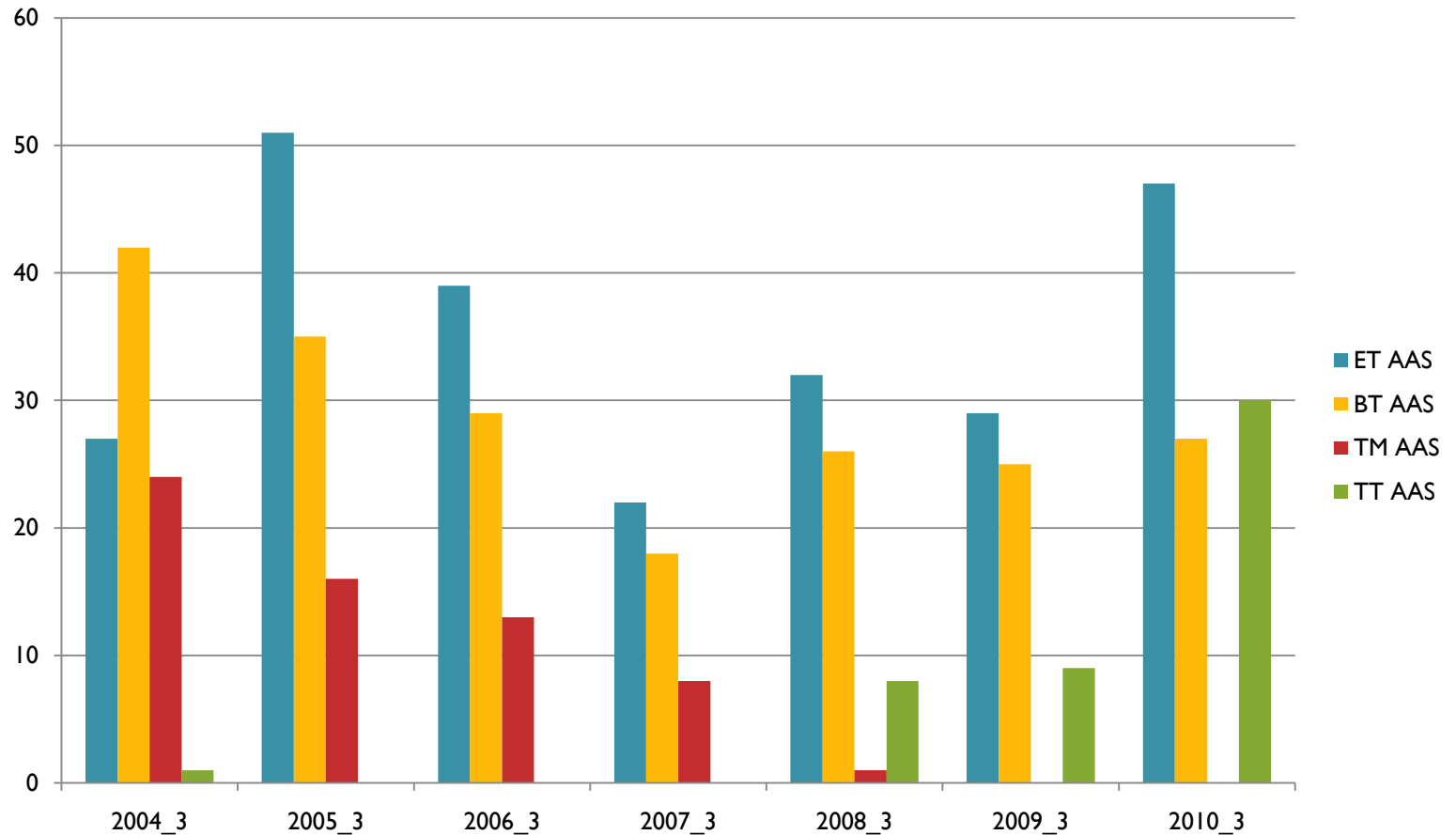
Trends AS Degree Programs

AS Degree Programs

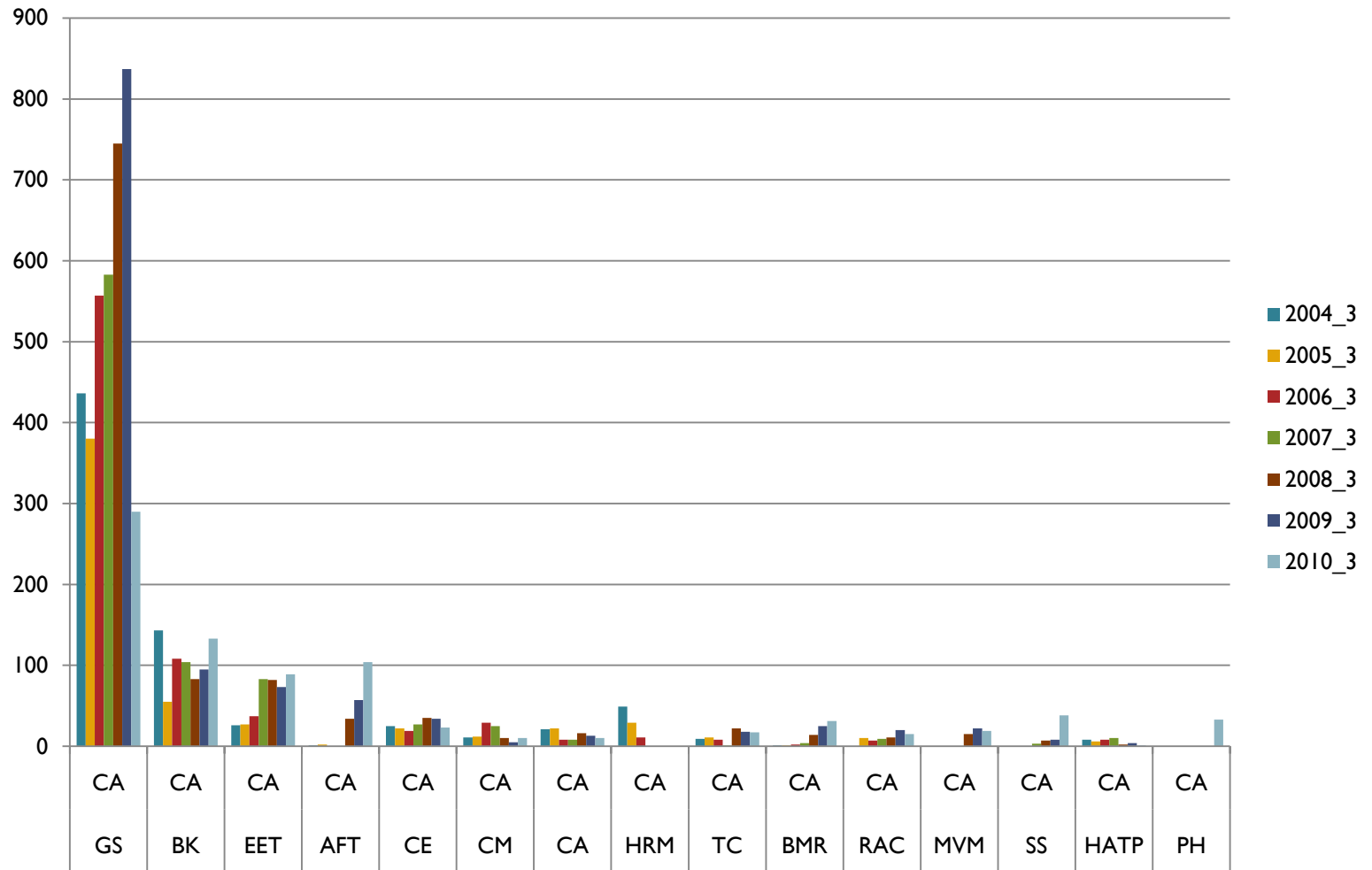


Trends AAS Degree Programs

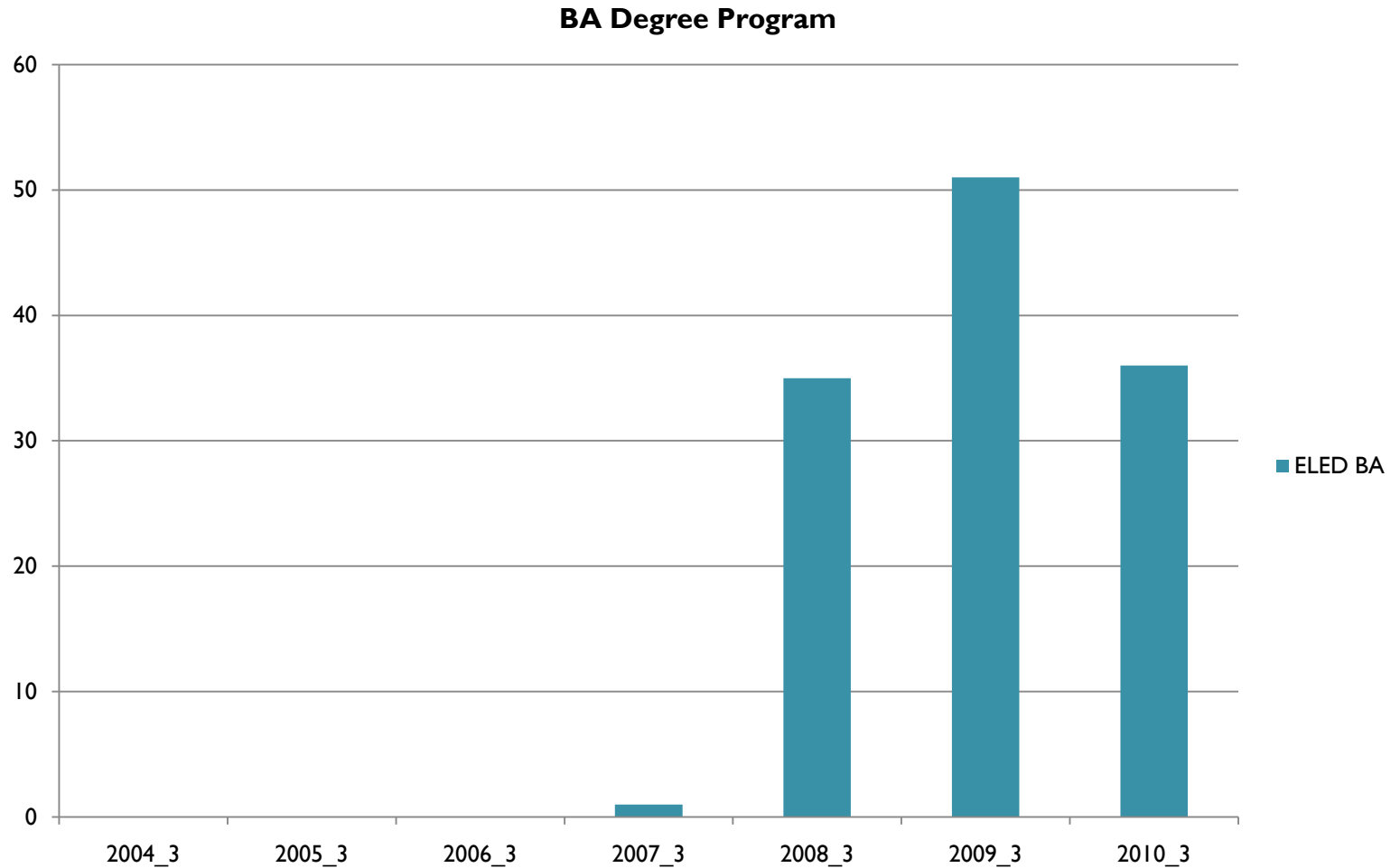
AAS Programs



Trends CA Programs

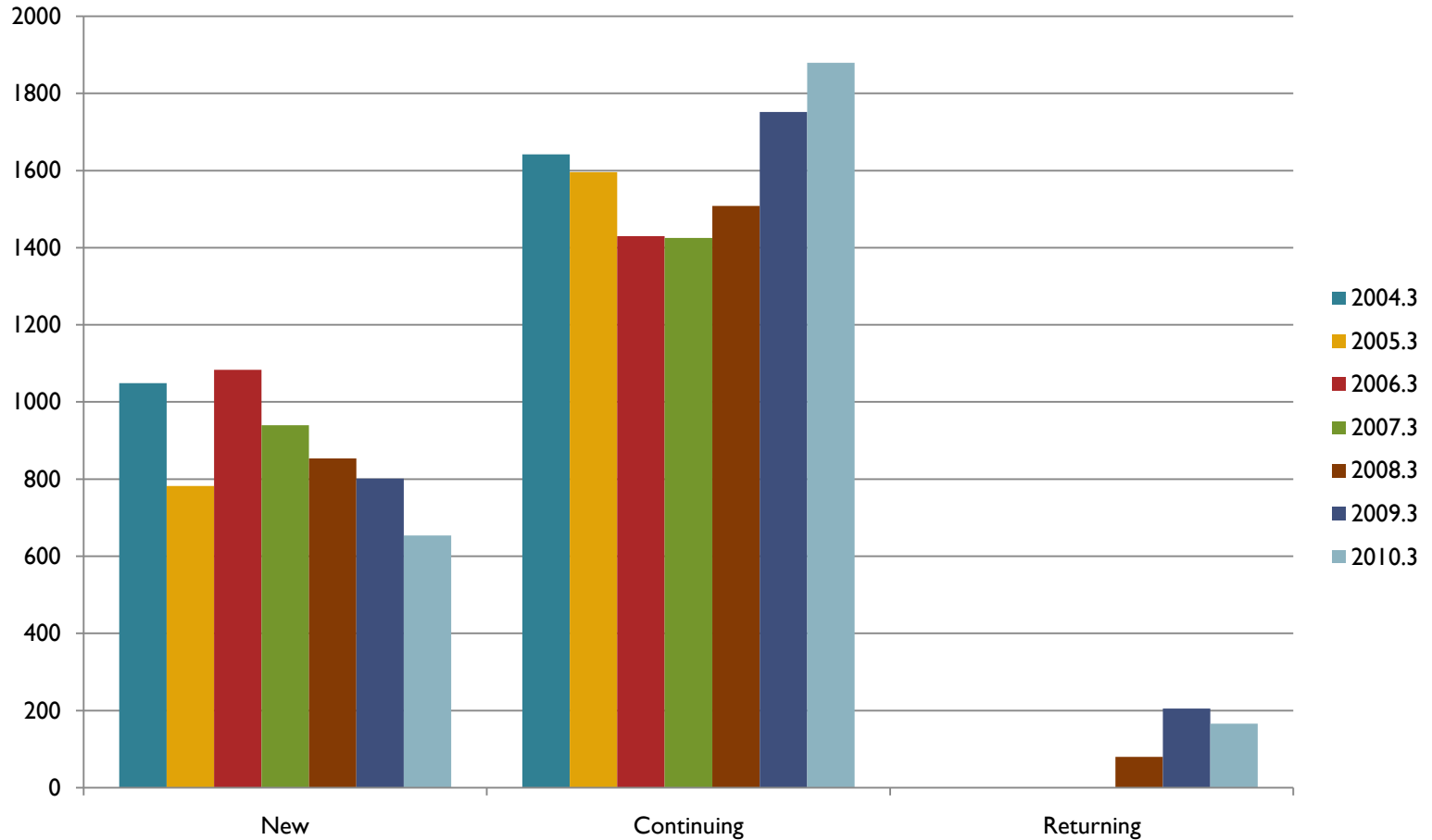


Trends BA Degree Program



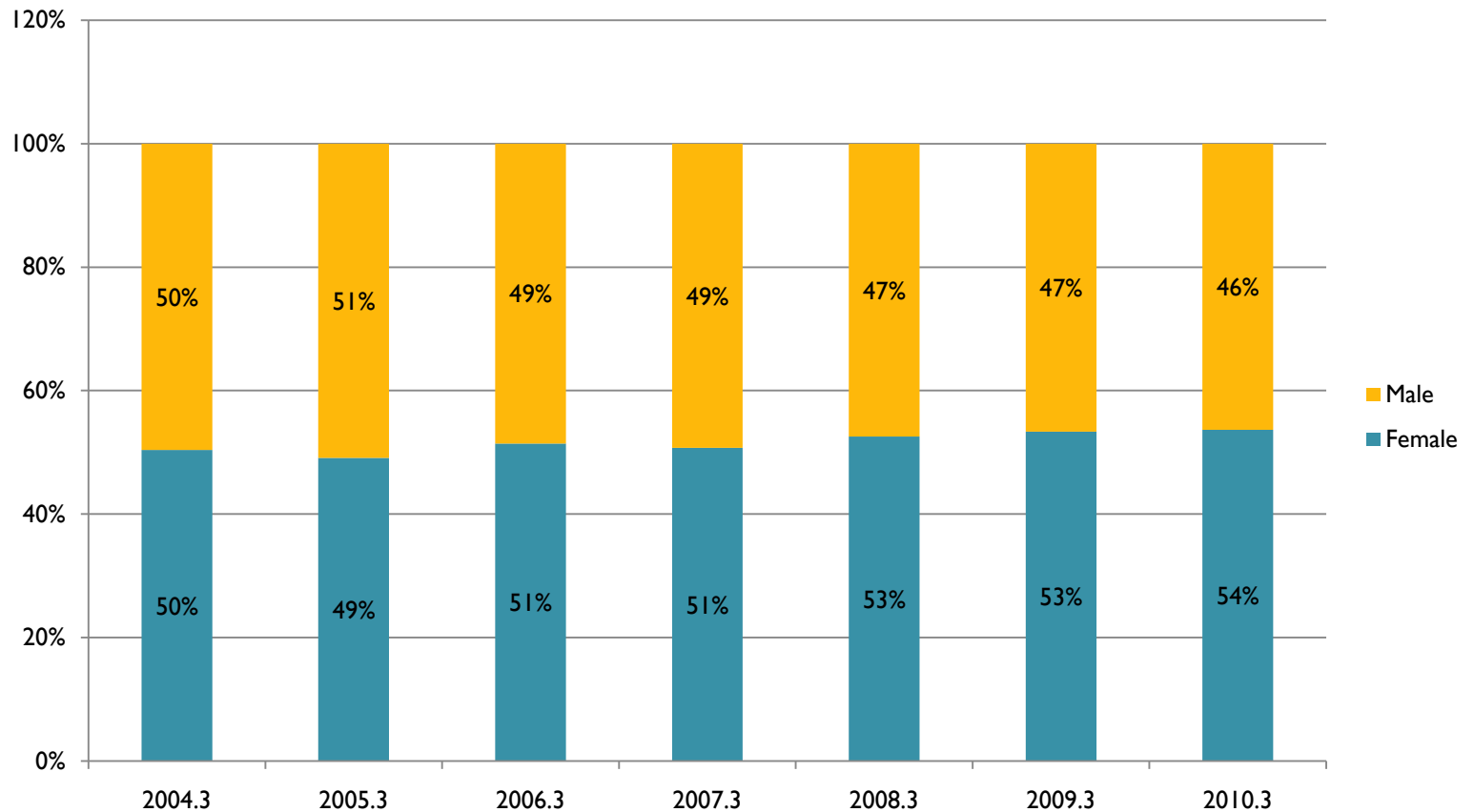
Enrollment Trends by Student Type

Fall Semester 2004 - 2010 Enrollment by Student Type



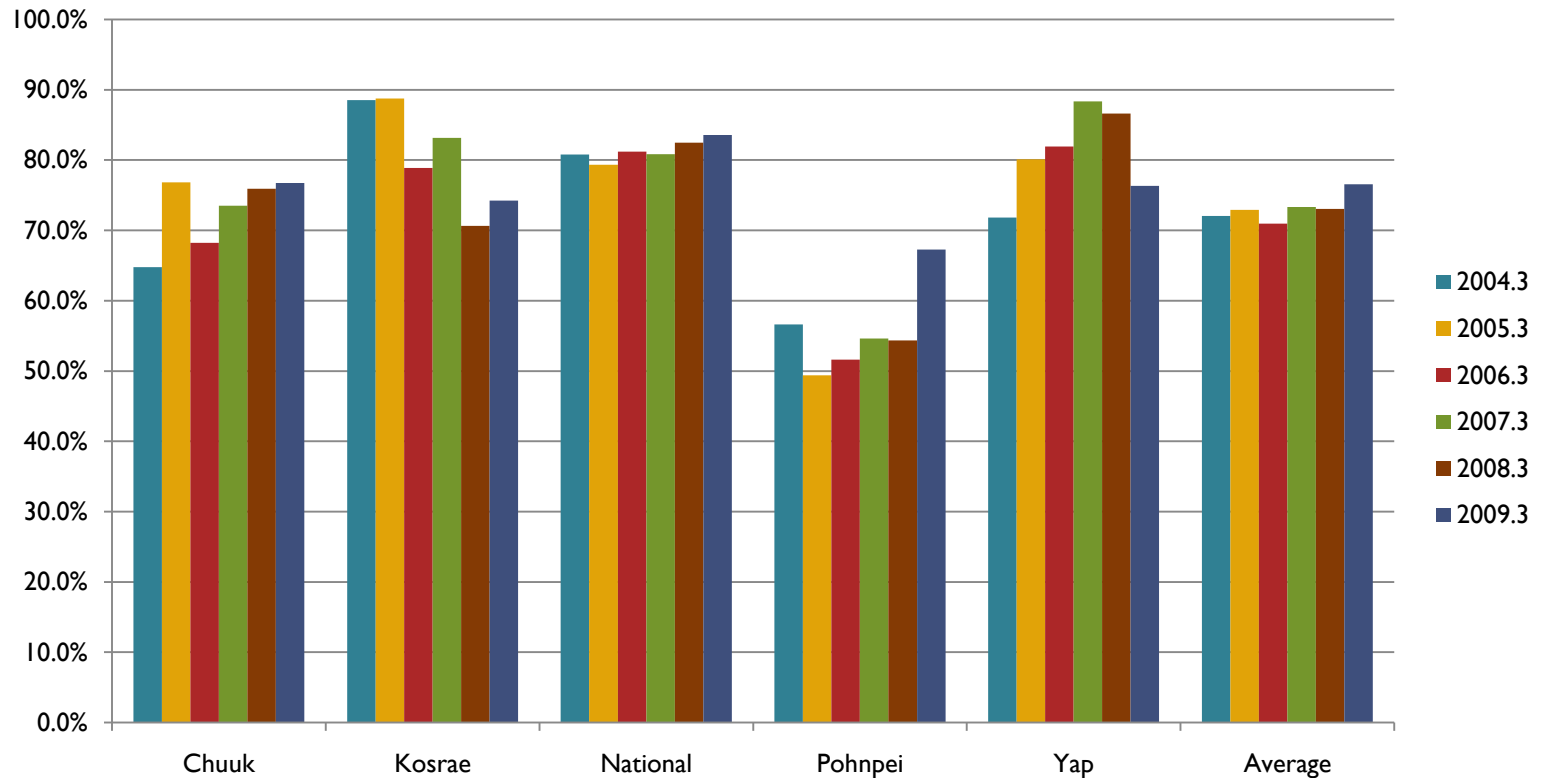
Trends Enrollment by Gender

Fall Semesters 2004 - 2010 Enrollment by Gender



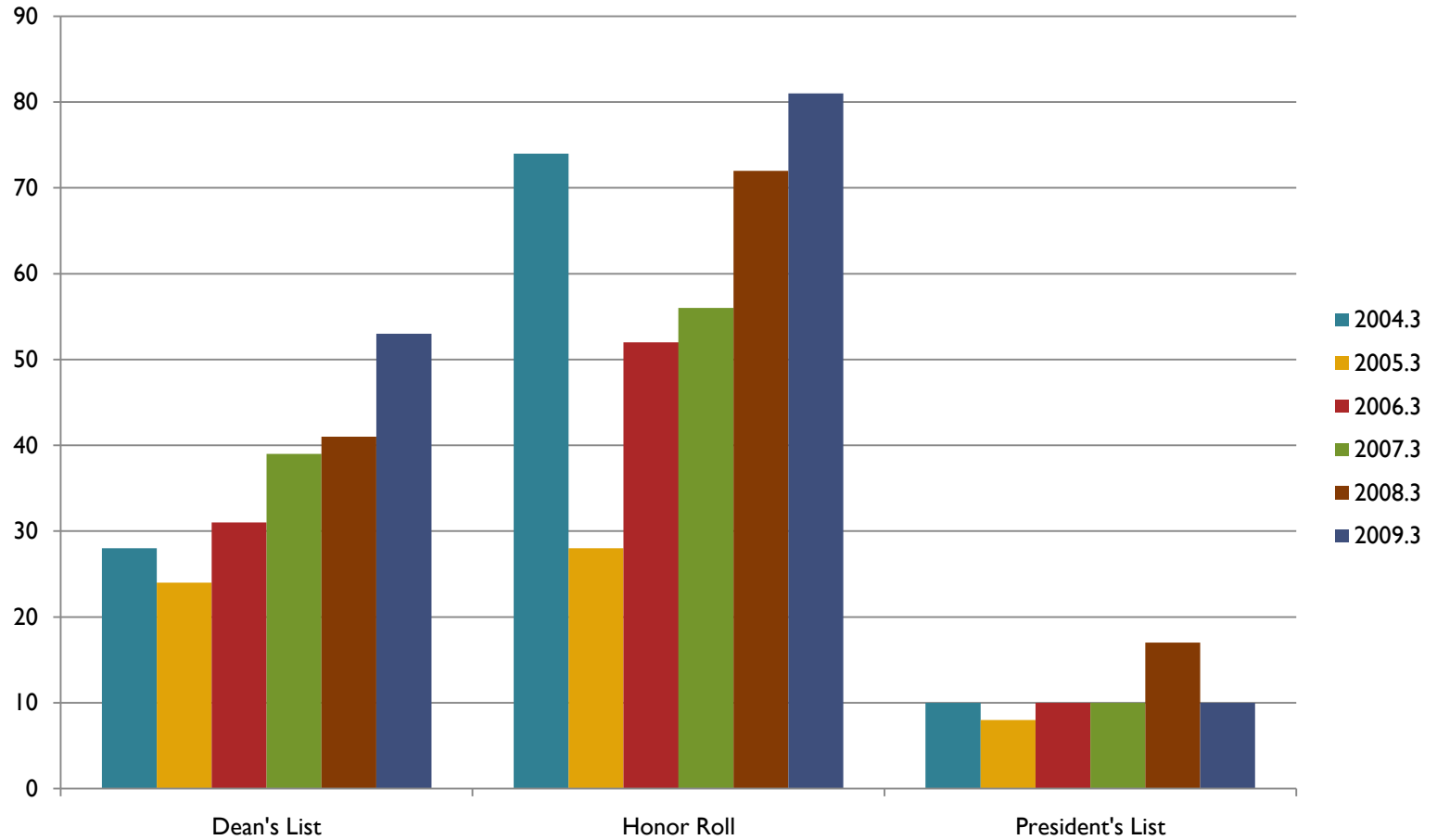
Trends Good Academic Standing

Fall Semesters 2004 - 2010 Students in Good Academic Standing



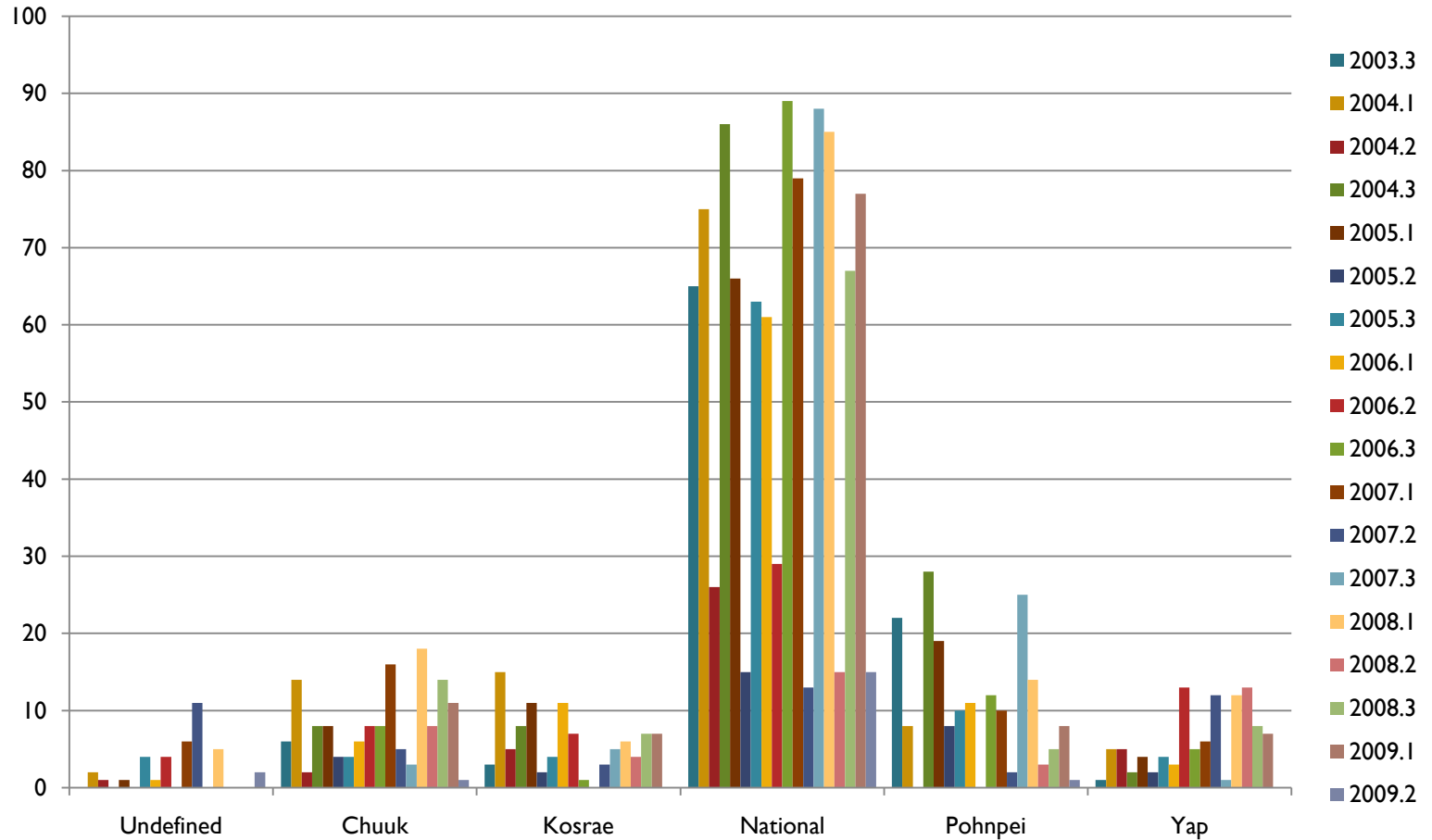
Trends Honor List

Fall Semesters 2004 - 2010 Honors

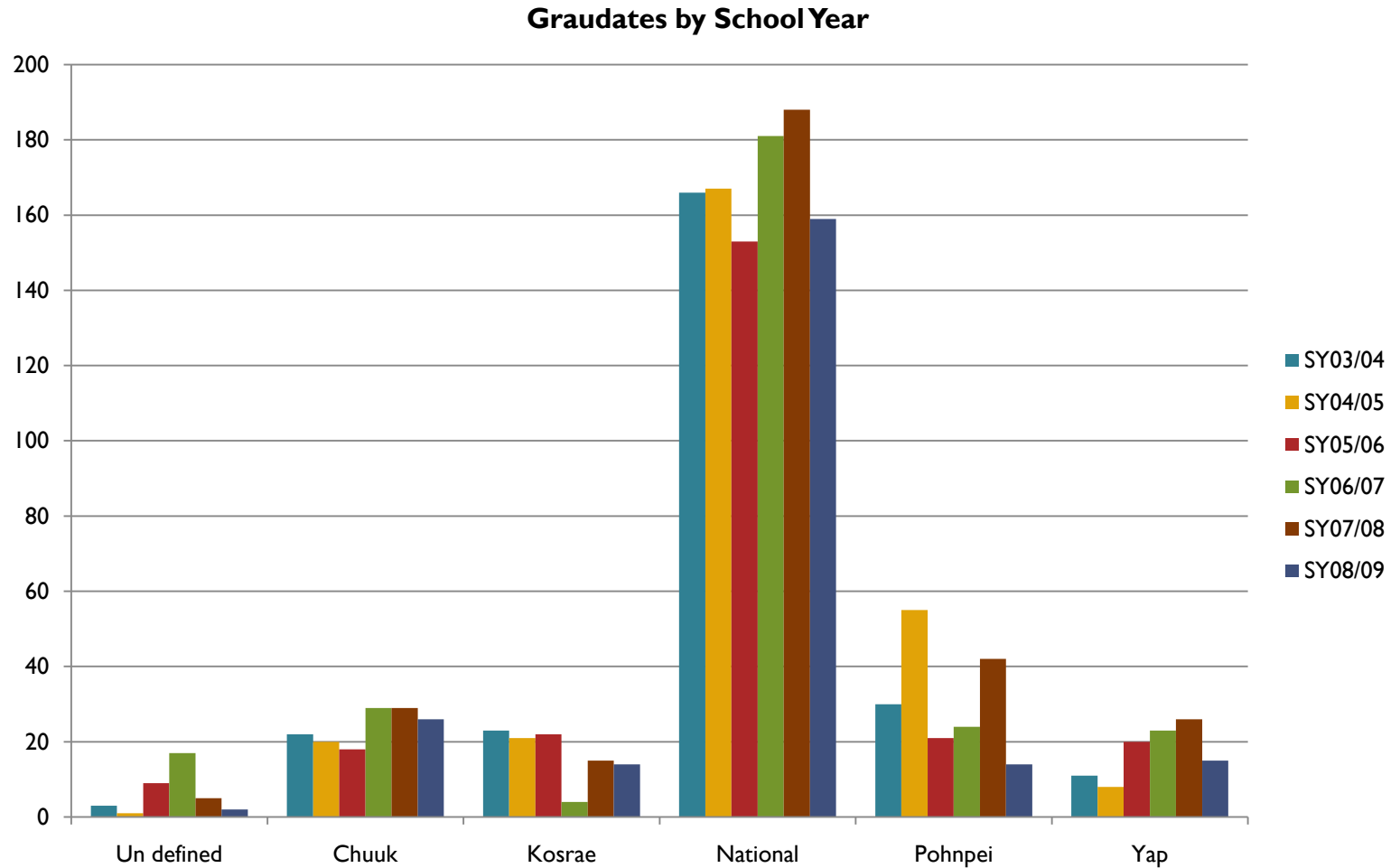


Trends Graduates by Campus

Graduates by Campus & Term

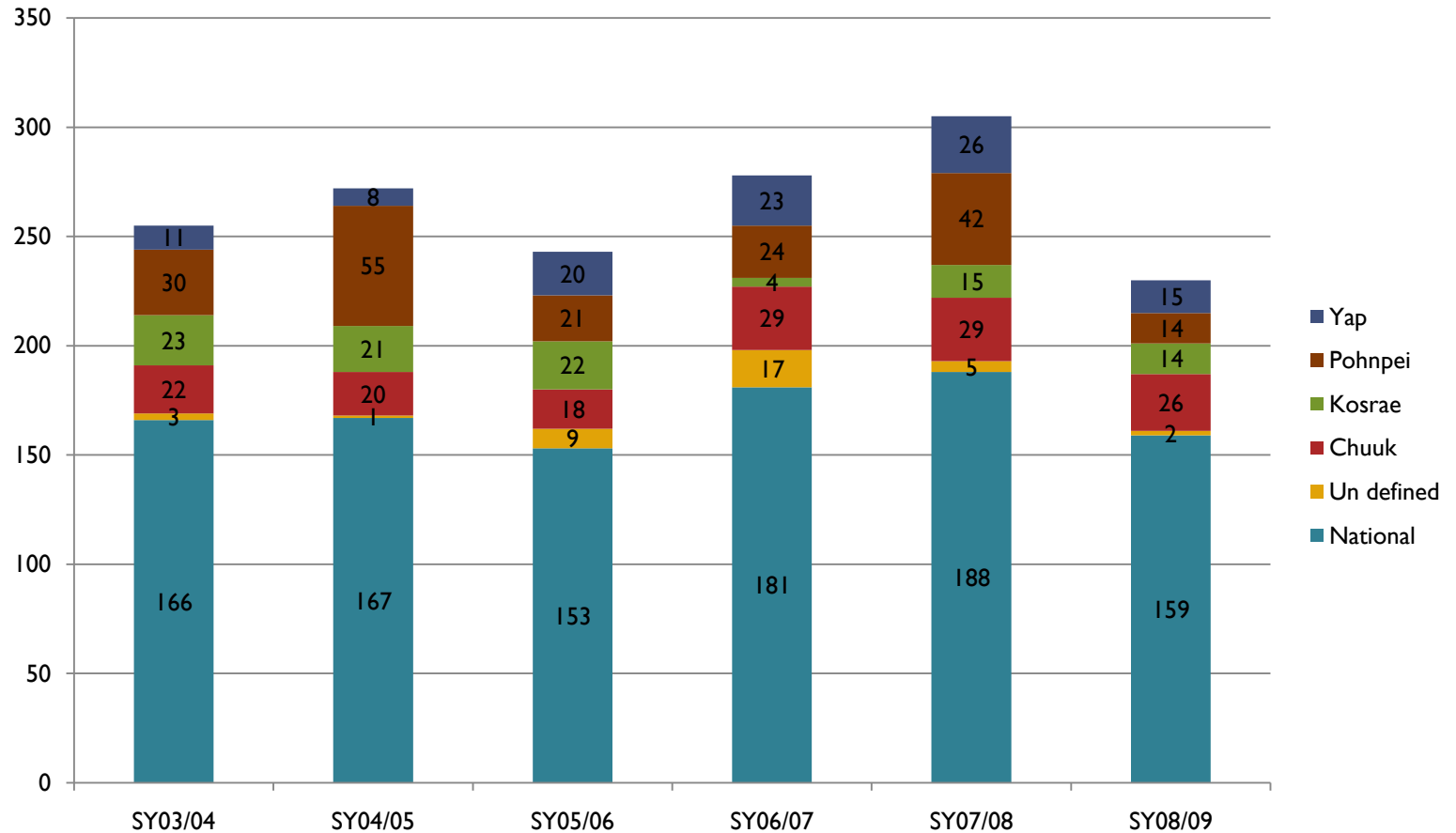


Trends Graduates by School Year

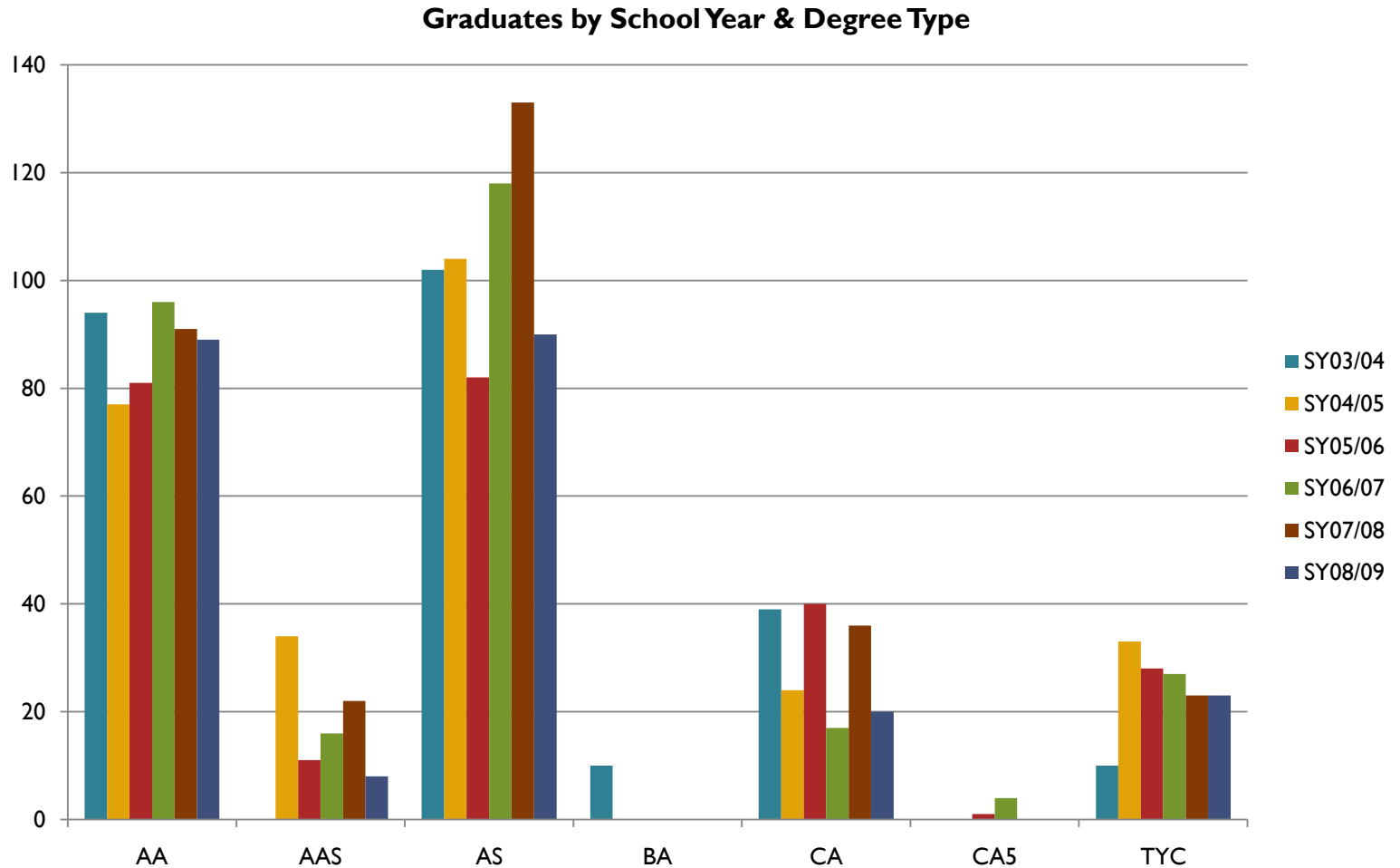


Trends Graduates by School Year

Graduates by School Year

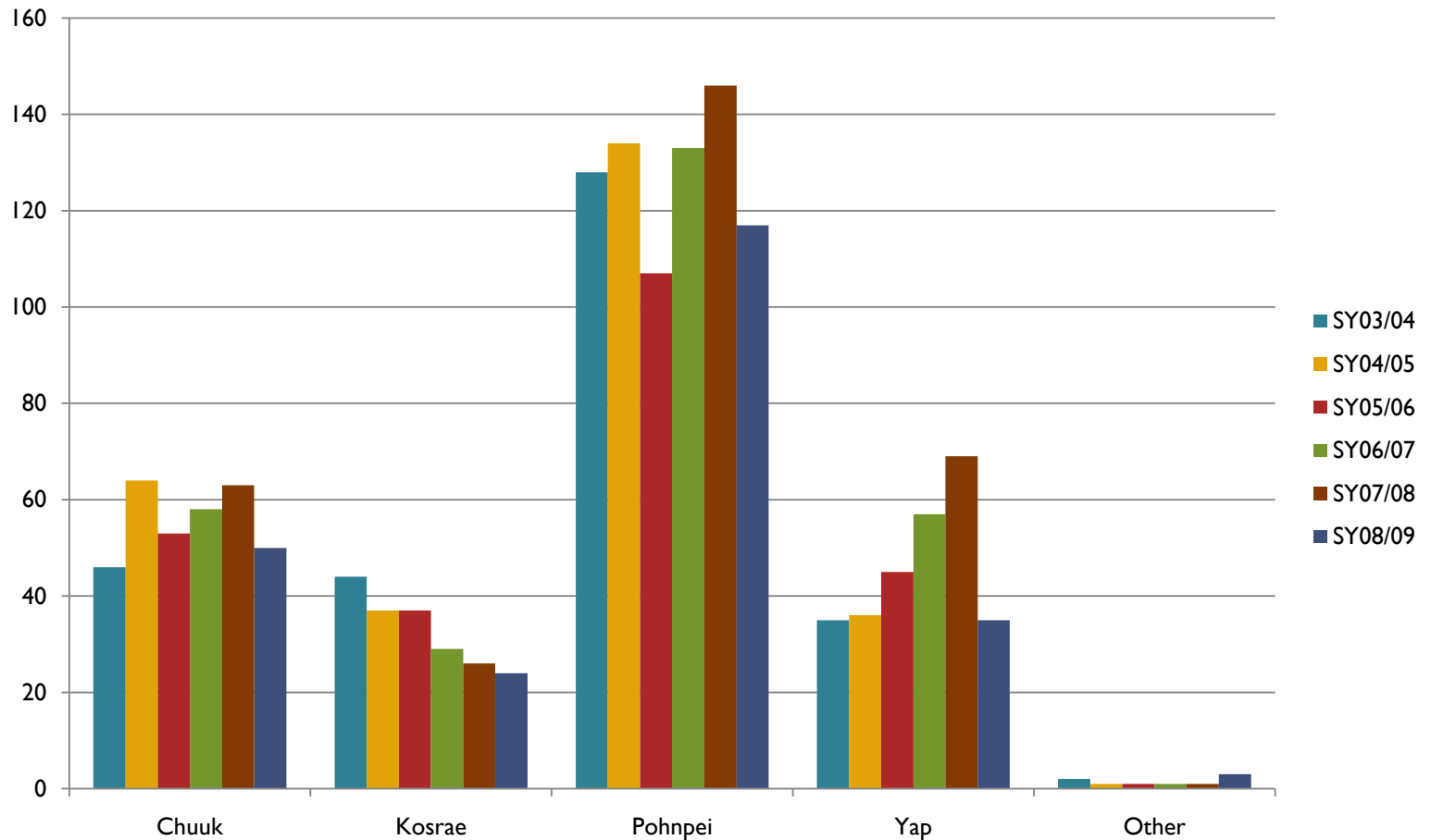


Trends Graduates by SY & Degree



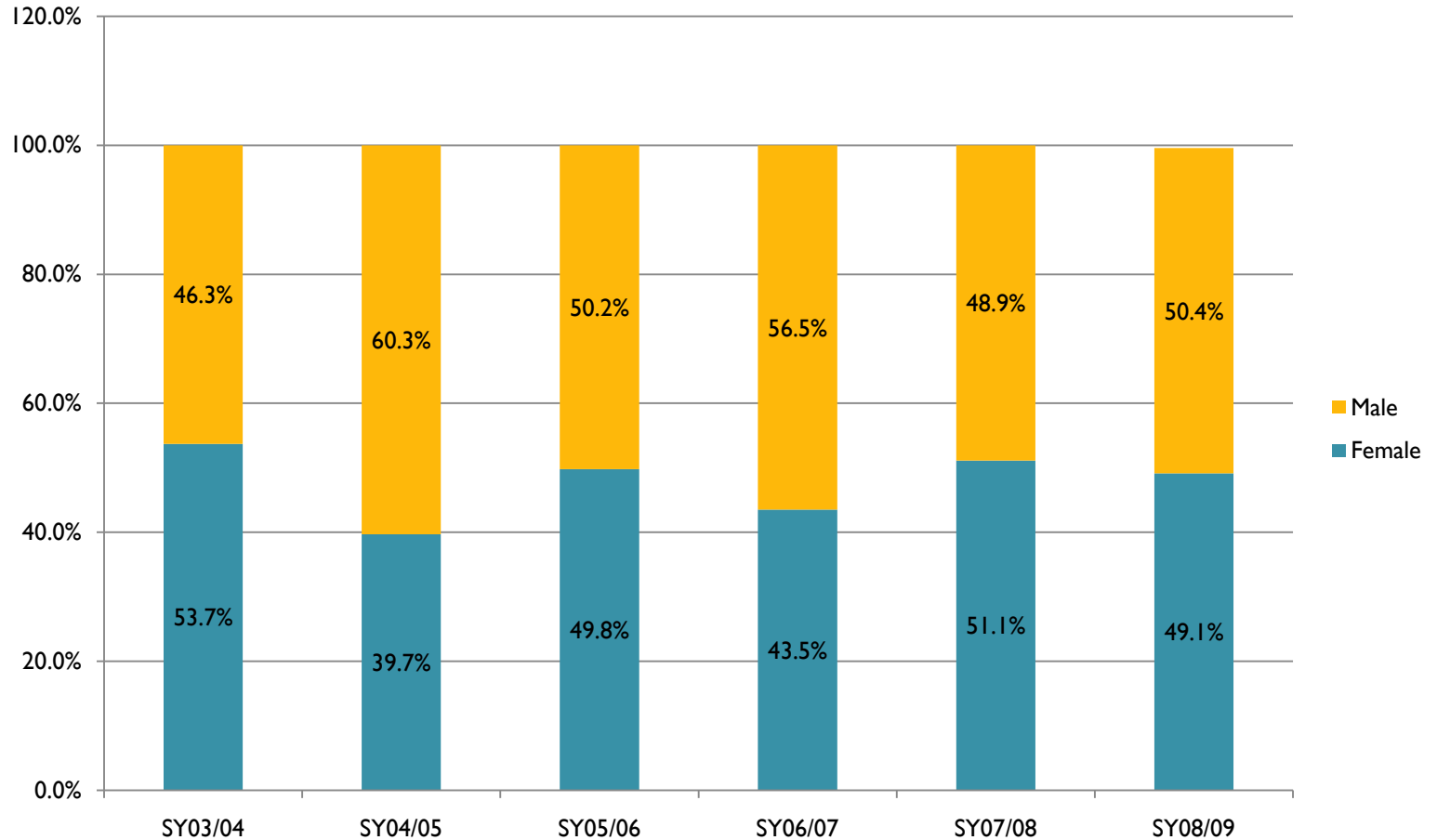
Trends Graduates by State of Origin

Graduates by State of Origin



Trends Graduates by Gender

Graduates by Gender



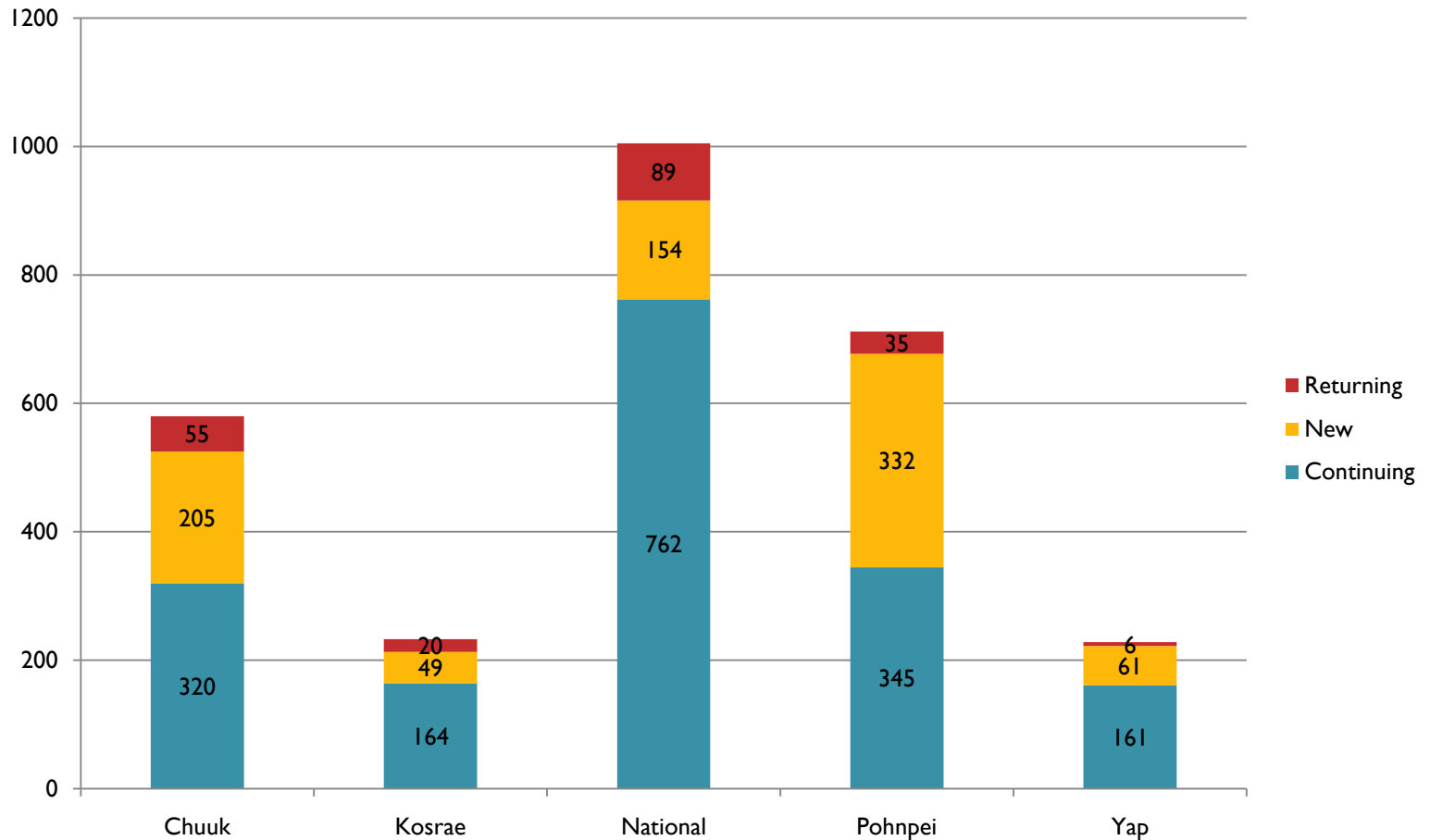
Fall 2009



DETAIL FOR ENROLLMENT & ACHIEVEMENT

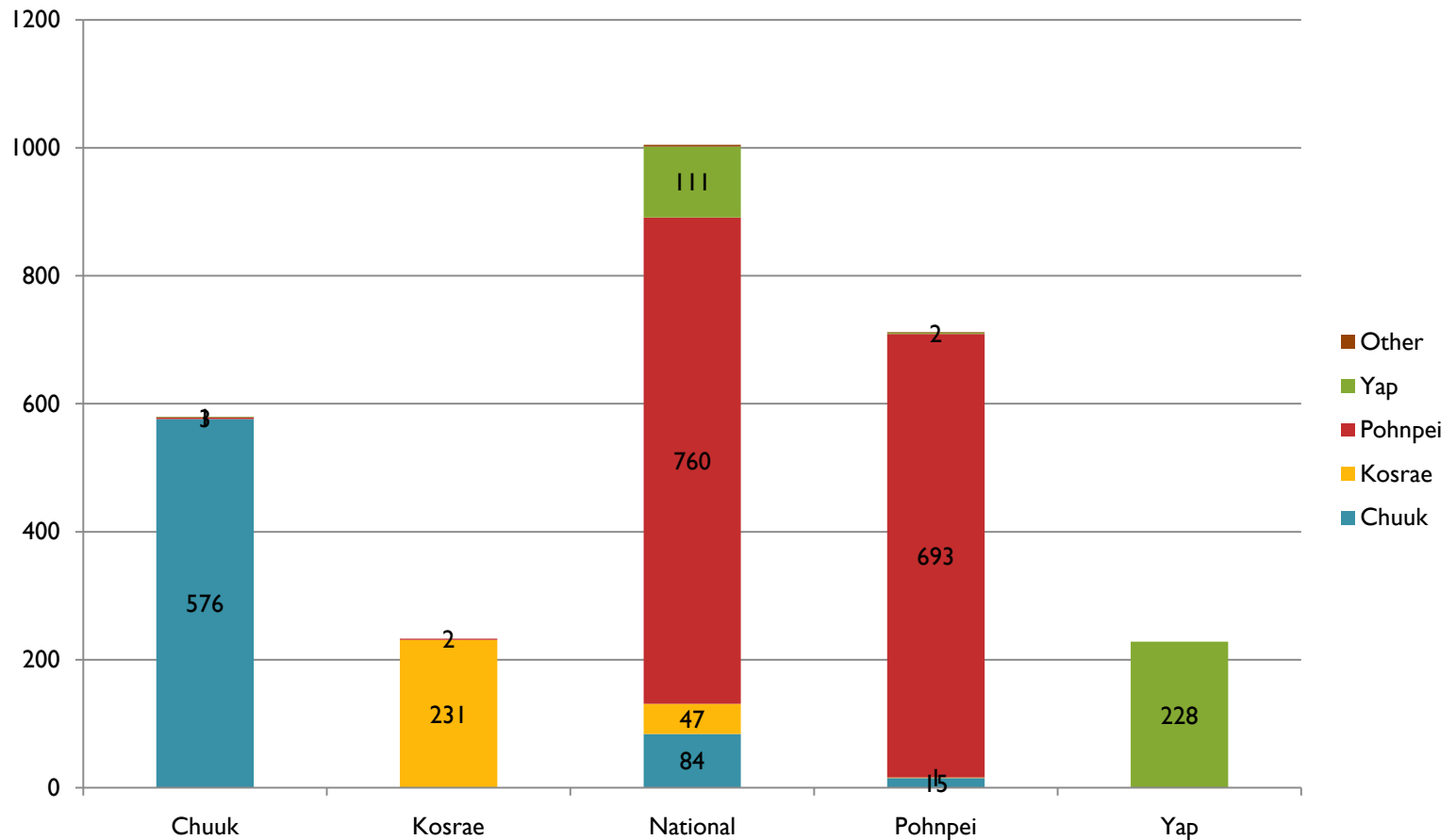
Fall 2009 Enrollment by Campus & Student Type

Fall 2009 Enrollment by Student Type & Campus



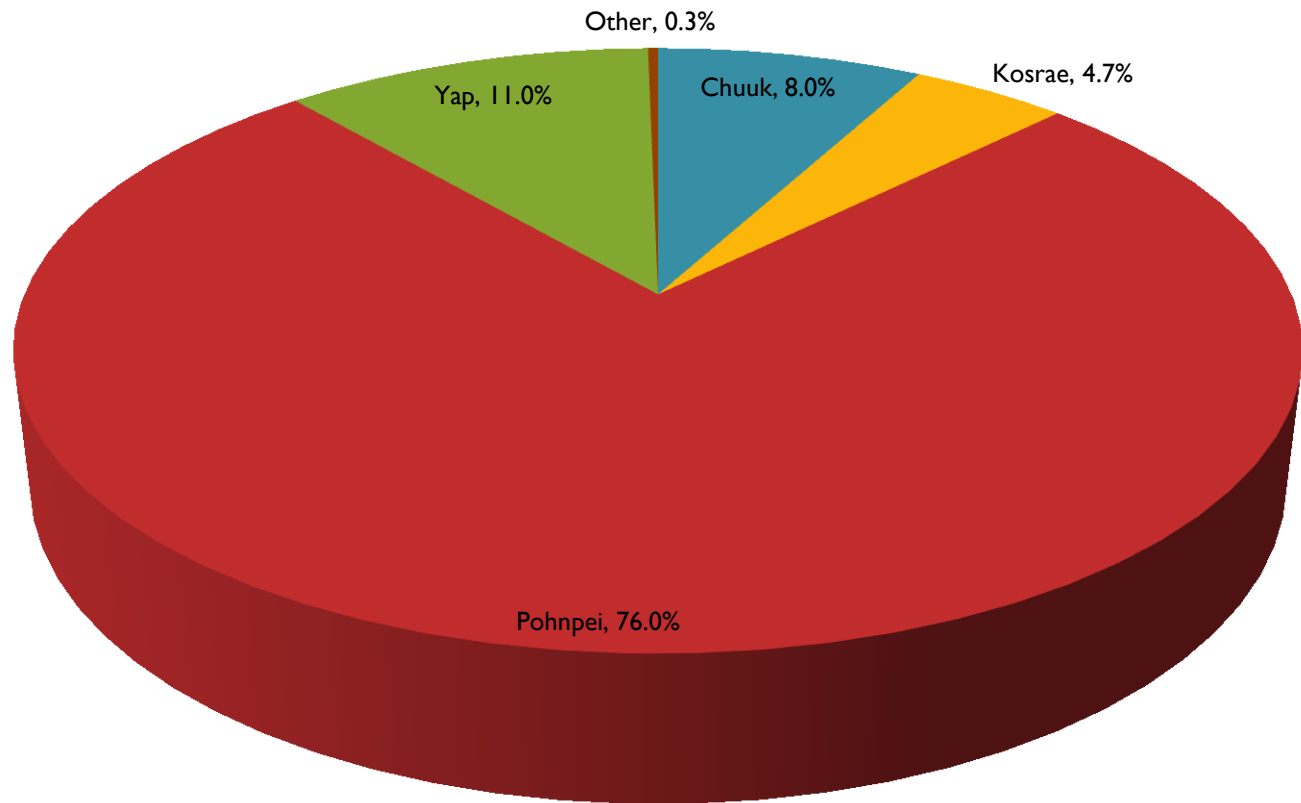
Fall 2009 Enrollment by Campus and State of Origin

Fall 2009 Enrollment by State Origin & Campus



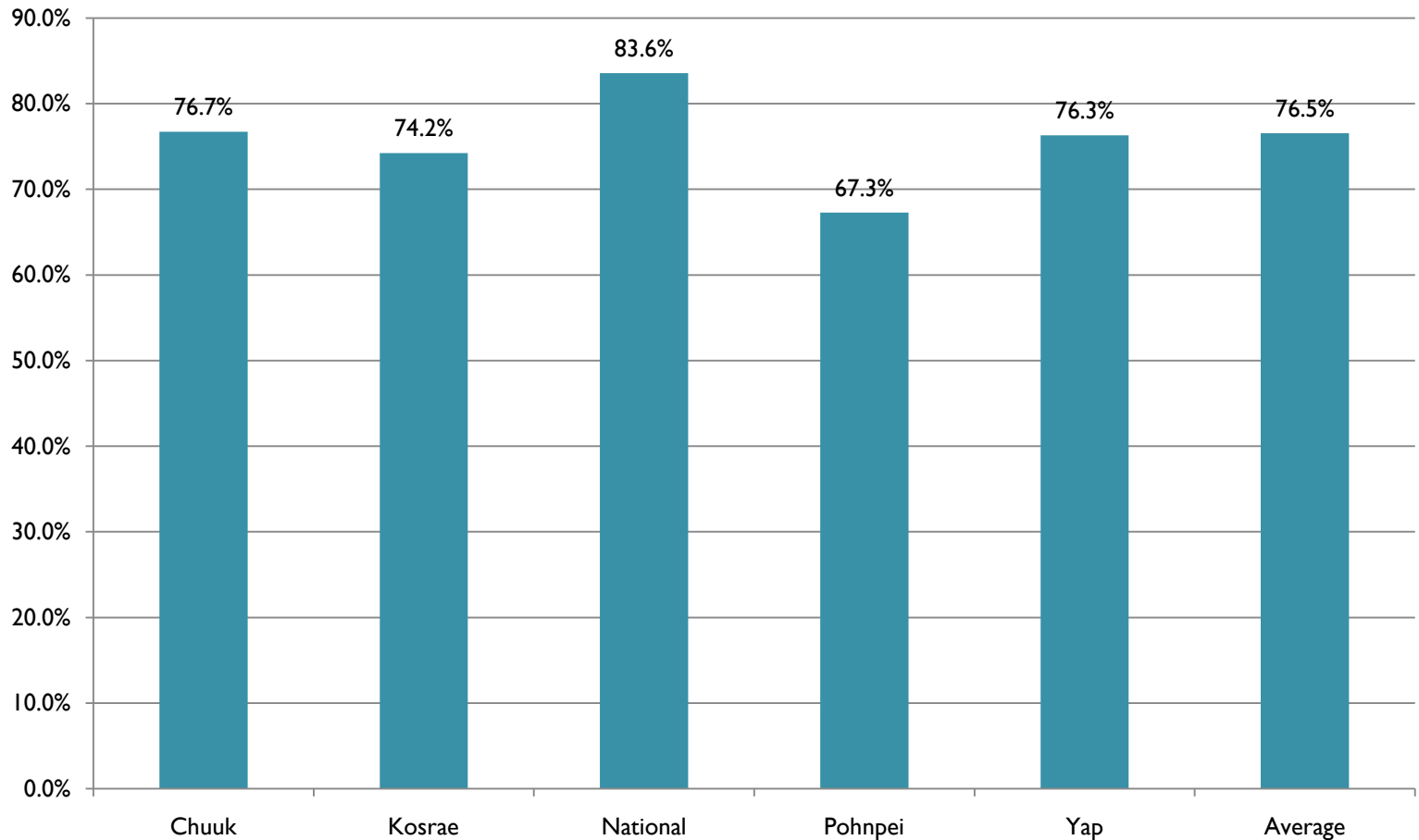
Fall 2009 National Campus Enrollment by State of Origin

Fall 2009 Enrollment National Campus by State Origin



Fall 2009 Percent of Students in Good Academic Standing

Fall 2009 Student in Good Academic Standing

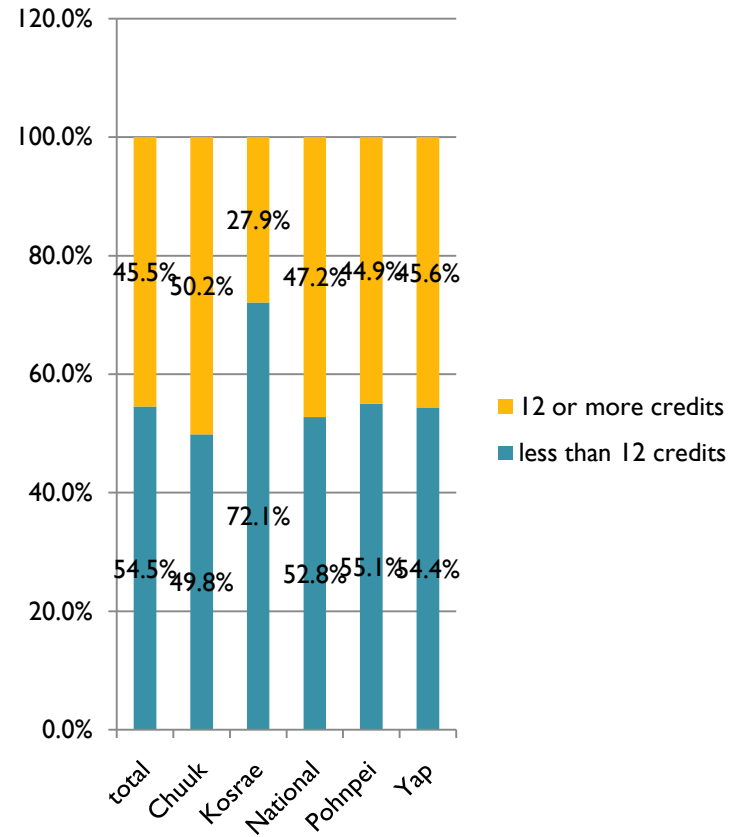


Fall 2009 Credits Enrolled vs. Credits Earned

Fall 2009 Student Enrollment 12 or more Credits



Fall 2009 Students Earning 12 or more Credits



Fall 2009 Average Credits Enrolled & Earned + TERM GPA by Campus & Student Type

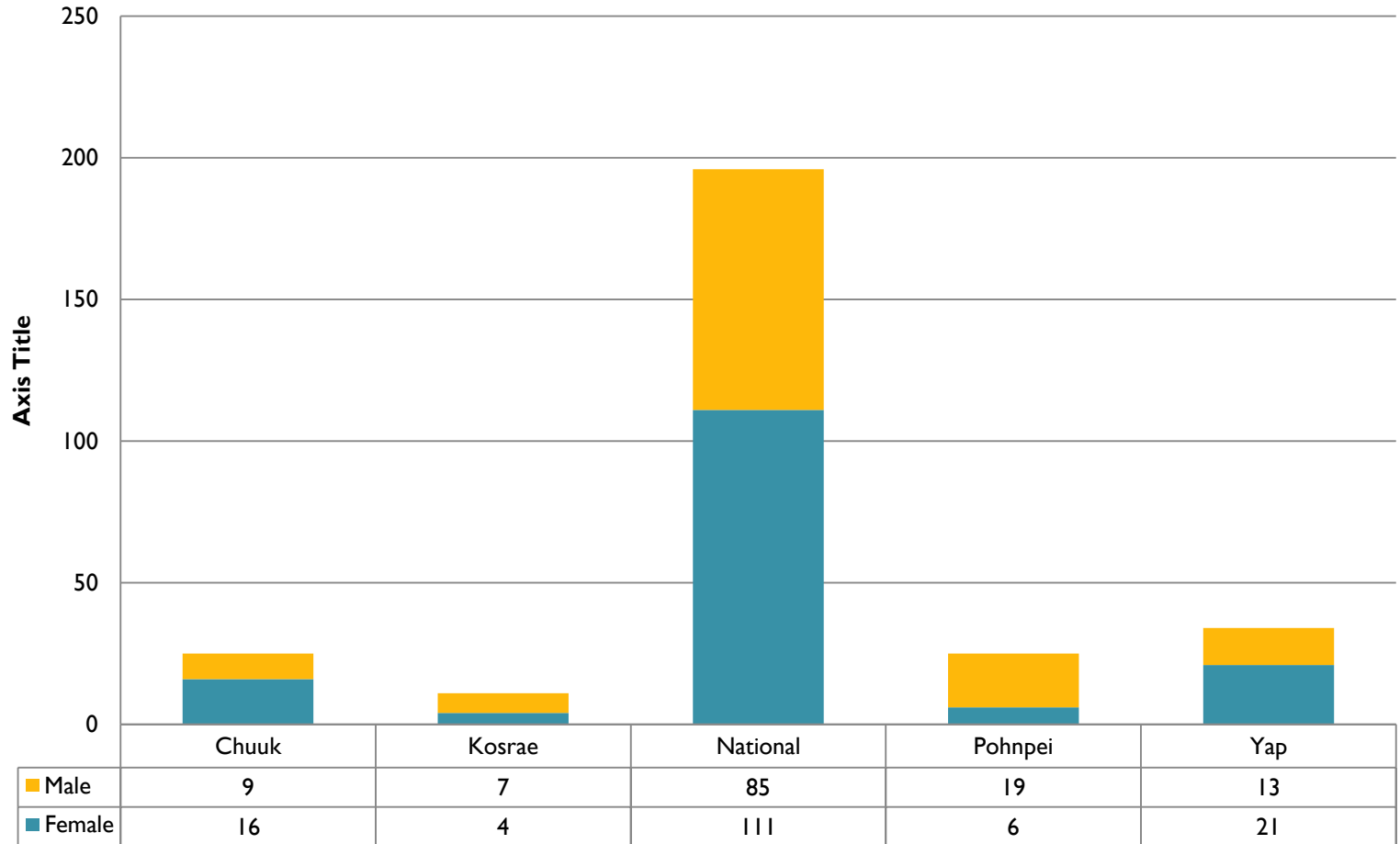
Campus	studentType	AvgCreditsENR	AVGCreditsEAR	AvgGPA	Diff
Chuuk	CN	10.3	8.6	2.21	1.7
Chuuk	NE	12.5	11.0	2.37	1.4
Chuuk	RE	10.0	9.3	2.62	0.8
Kosrae	CN	8.9	7.8	2.28	1.1
Kosrae	NE	10.2	8.1	1.79	2.1
Kosrae	RE	7.6	7.6	2.94	0.0
National	CN	10.9	9.6	2.30	1.3
National	NE	12.0	10.0	2.23	2.0
National	RE	8.7	7.9	2.43	0.8
Pohnpei	CN	9.3	8.1	2.09	1.2
Pohnpei	NE	11.5	10.1	2.10	1.4
Pohnpei	RE	6.8	5.6	2.20	1.2
Yap	CN	10.1	9.3	2.56	0.8
Yap	NE	11.6	9.4	1.80	2.2
Yap	RE	7.0	7.0	2.55	0.0

Fall 2009 Average Credits Enrolled & Earned by Campus & Degree

Campus	degree	AvgCreditsENR	AVGCreditsEAR	AvgGPA	Diff
Chuuk	AA	12.4	10.1	2.38	2.3
Chuuk	AS	11.2	9.8	2.62	1.4
Chuuk	CA	11.0	9.4	2.16	1.6
Chuuk	TYC	8.0	6.5	3.84	1.5
Kosrae	AA	10.2	9.6	2.51	0.6
Kosrae	AAS	10.0	9.8	2.98	0.3
Kosrae	AS	9.8	9.3	2.49	0.5
Kosrae	CA	9.2	7.2	1.81	2.0
Kosrae	TYC	3.0	3.0	3.15	0.0
Kosrae	UD	3.0	3.0	3.50	0.0
National	AA	11.4	10.0	2.26	1.4
National	AS	10.8	9.2	2.15	1.6
National	BA	10.4	9.9	3.14	0.5
National	CA	7.2	7.0	2.52	0.2
National	TYC	10.1	9.7	2.75	0.4
National	UD	5.1	3.6	1.77	1.5
Pohnpei	AA	10.1	8.6	2.02	1.6
Pohnpei	AAS	11.3	10.9	2.79	0.4
Pohnpei	AS	9.7	8.9	2.49	0.9
Pohnpei	CA	10.2	8.8	2.01	1.4
Pohnpei	UD	3.0	1.5	1.50	1.5
Yap	AA	12.3	10.1	2.42	2.2
Yap	AAS	6.0	6.0	2.50	0.0
Yap	AS	8.9	8.2	2.79	0.8
Yap	CA	10.9	9.8	2.11	1.1
Yap	UD	9.0	0.0	0.00	9.0

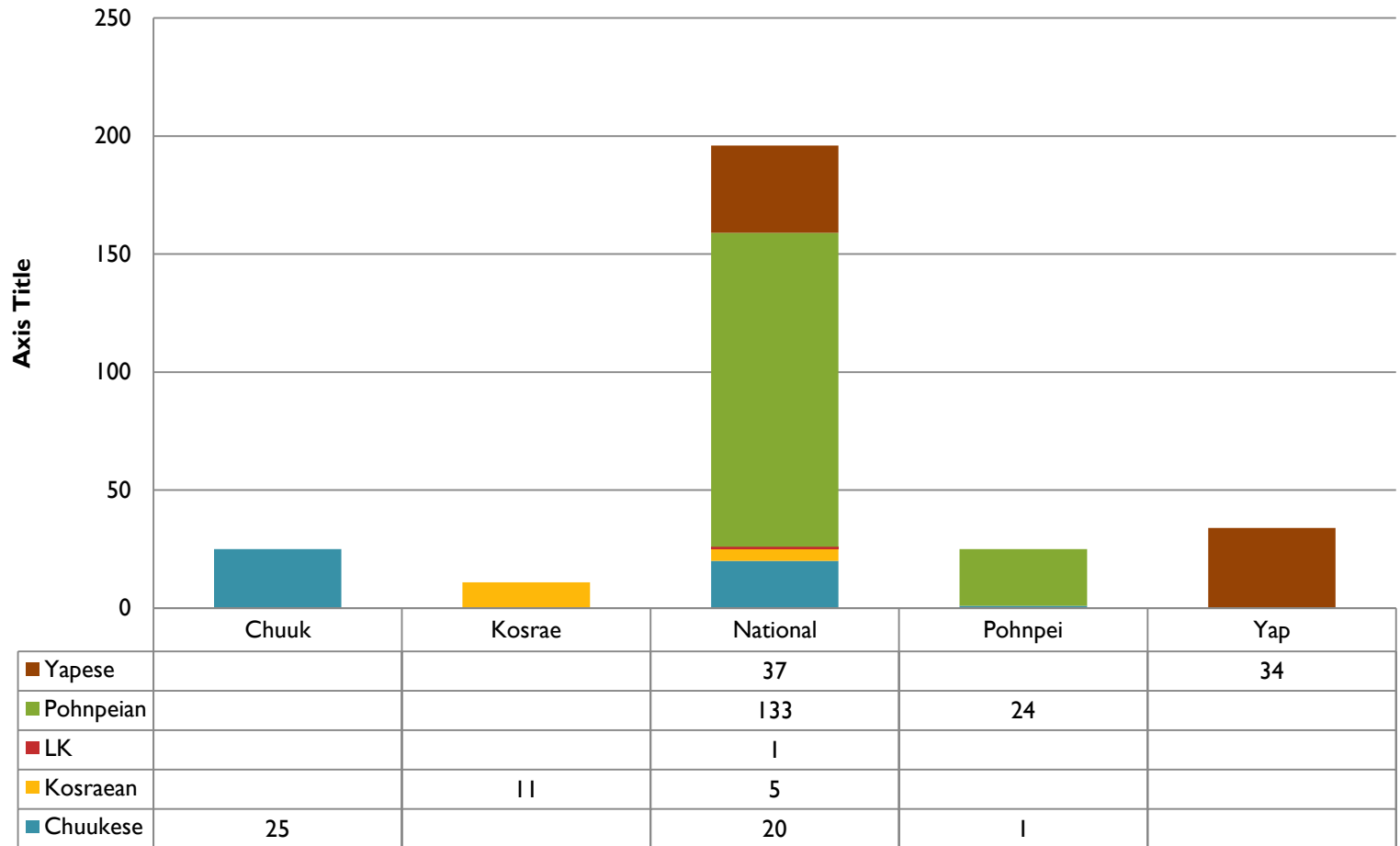
SY 09/10 Graduates by Gender & Campus

SY 09/10 Graduates by Gender & Campus



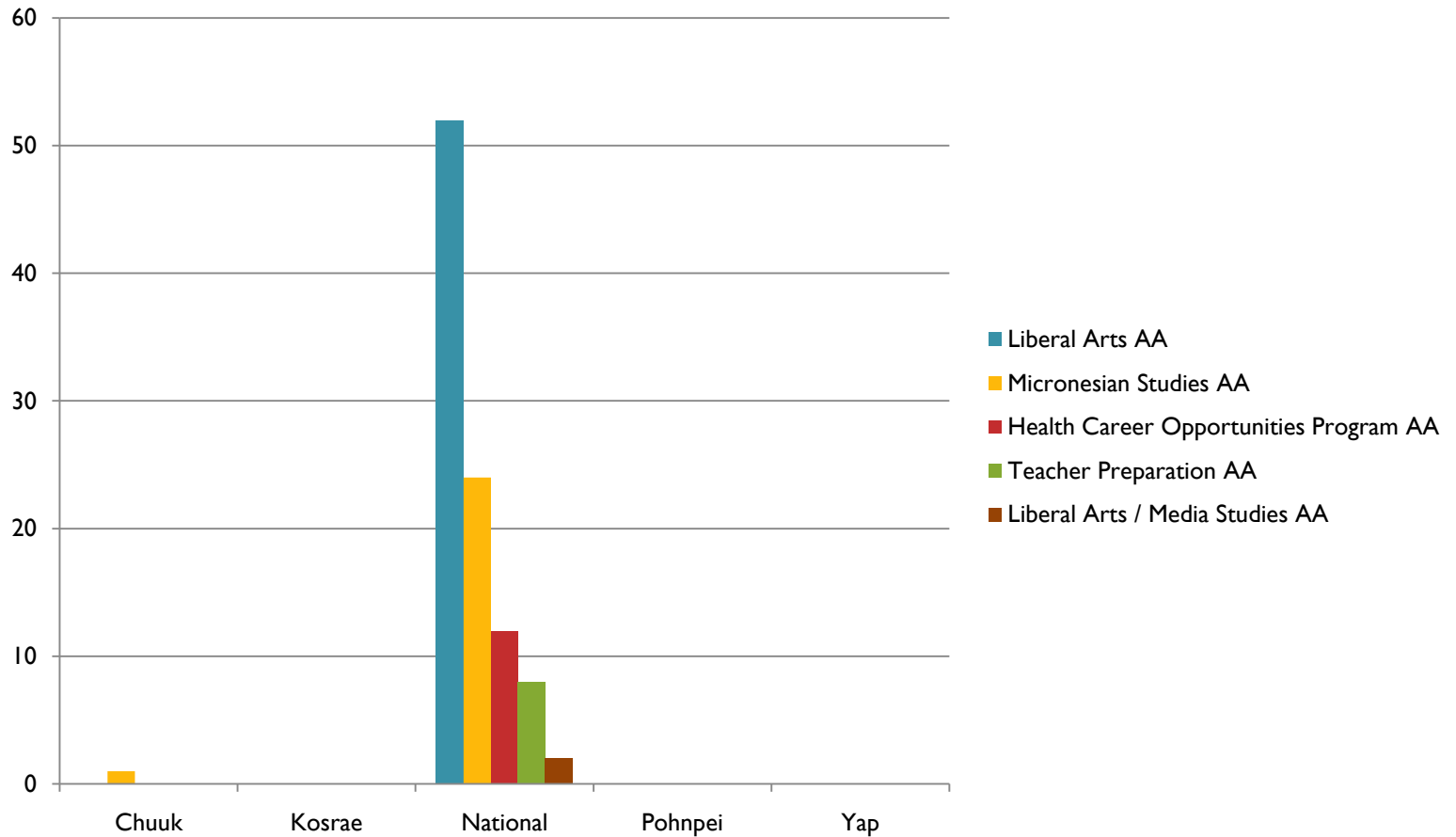
SY 09/10 Graduates by State Origin & Campus

SY 09/10 Graduates by State Origin & Campus



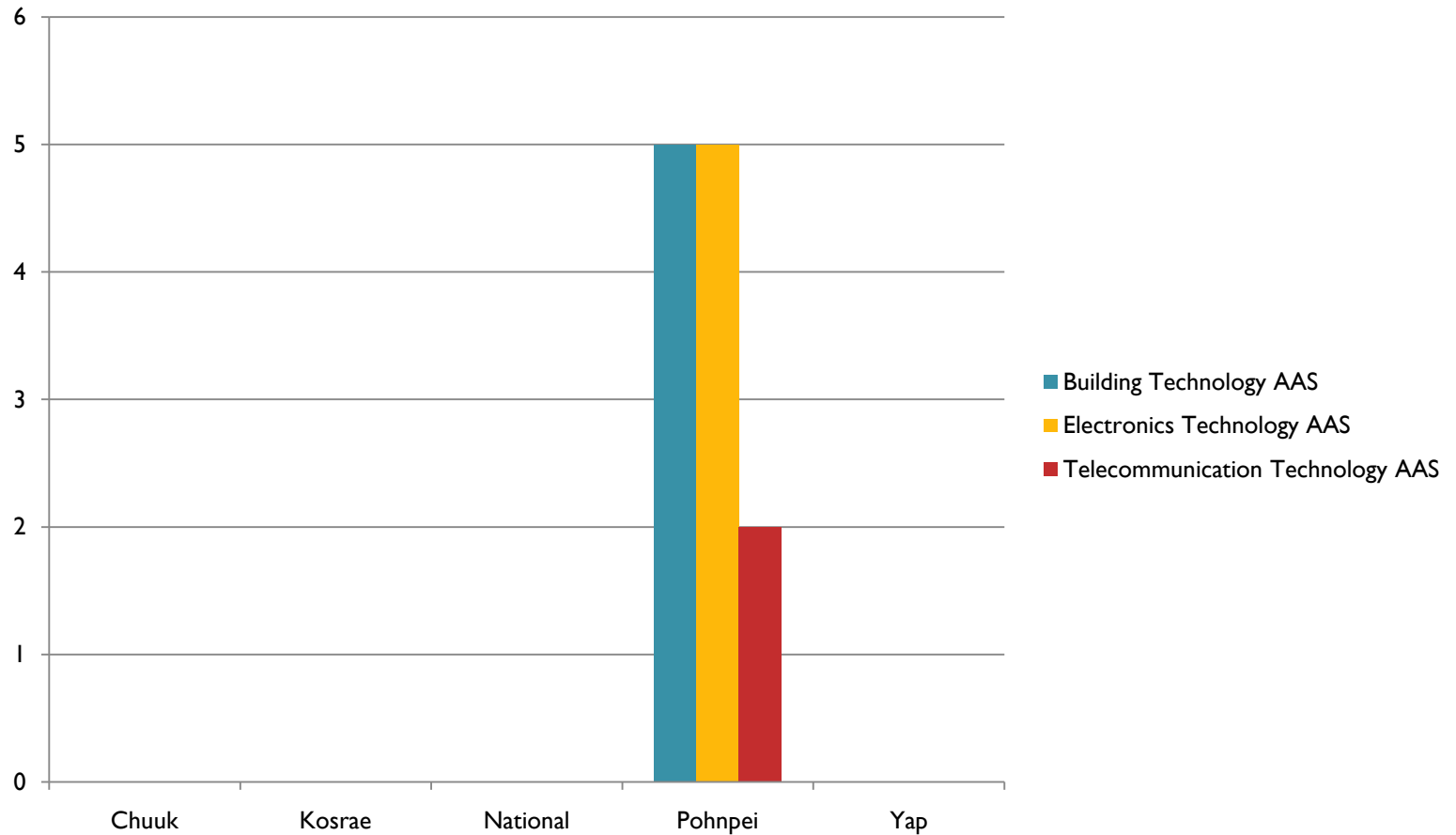
SY 09/10 Graduates AA Degree

SY 09/10 Graduates AA Degree



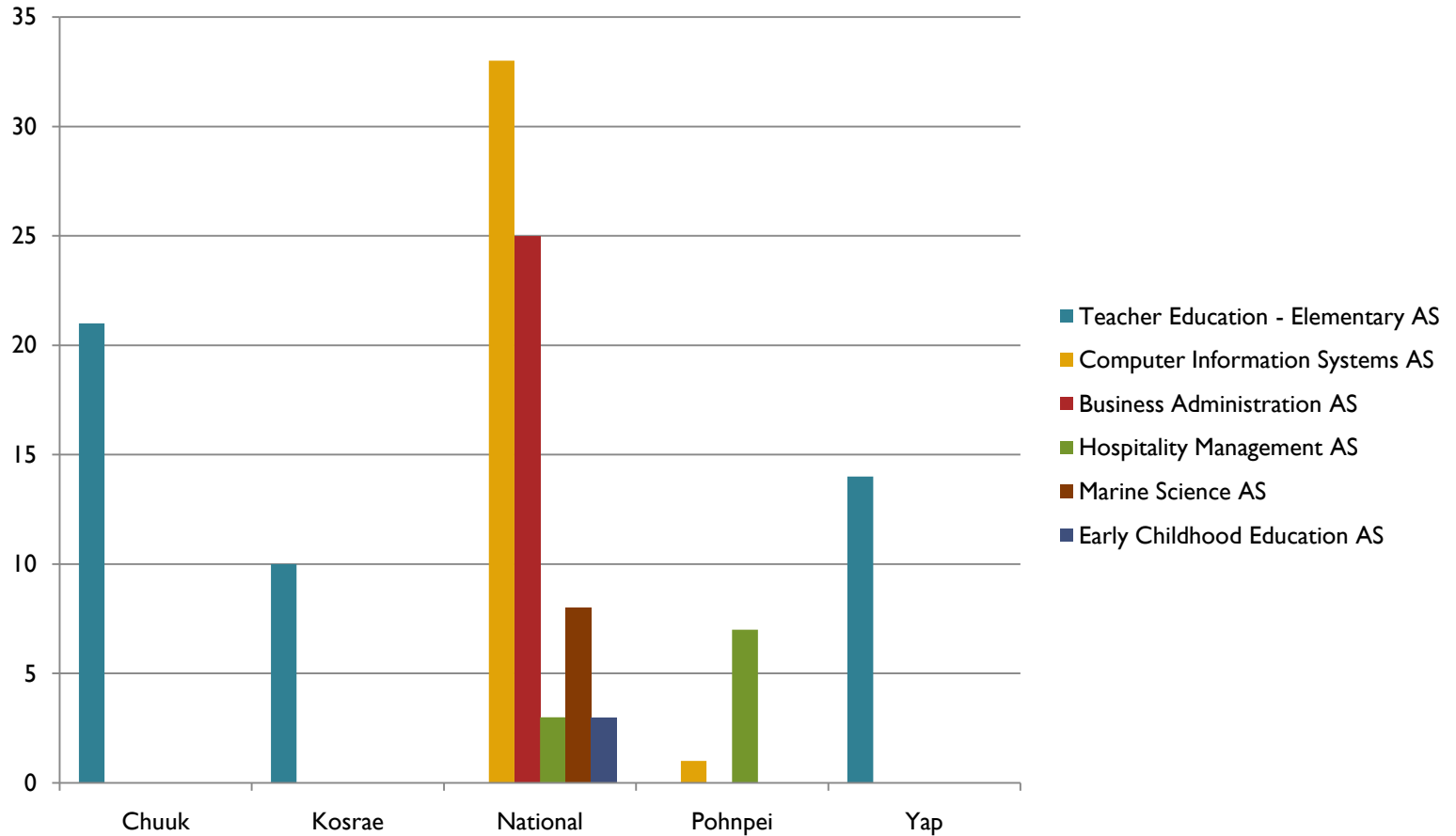
SY 09/10 Graduates AAS Degree

SY 09/10 Graduates AAS Degree



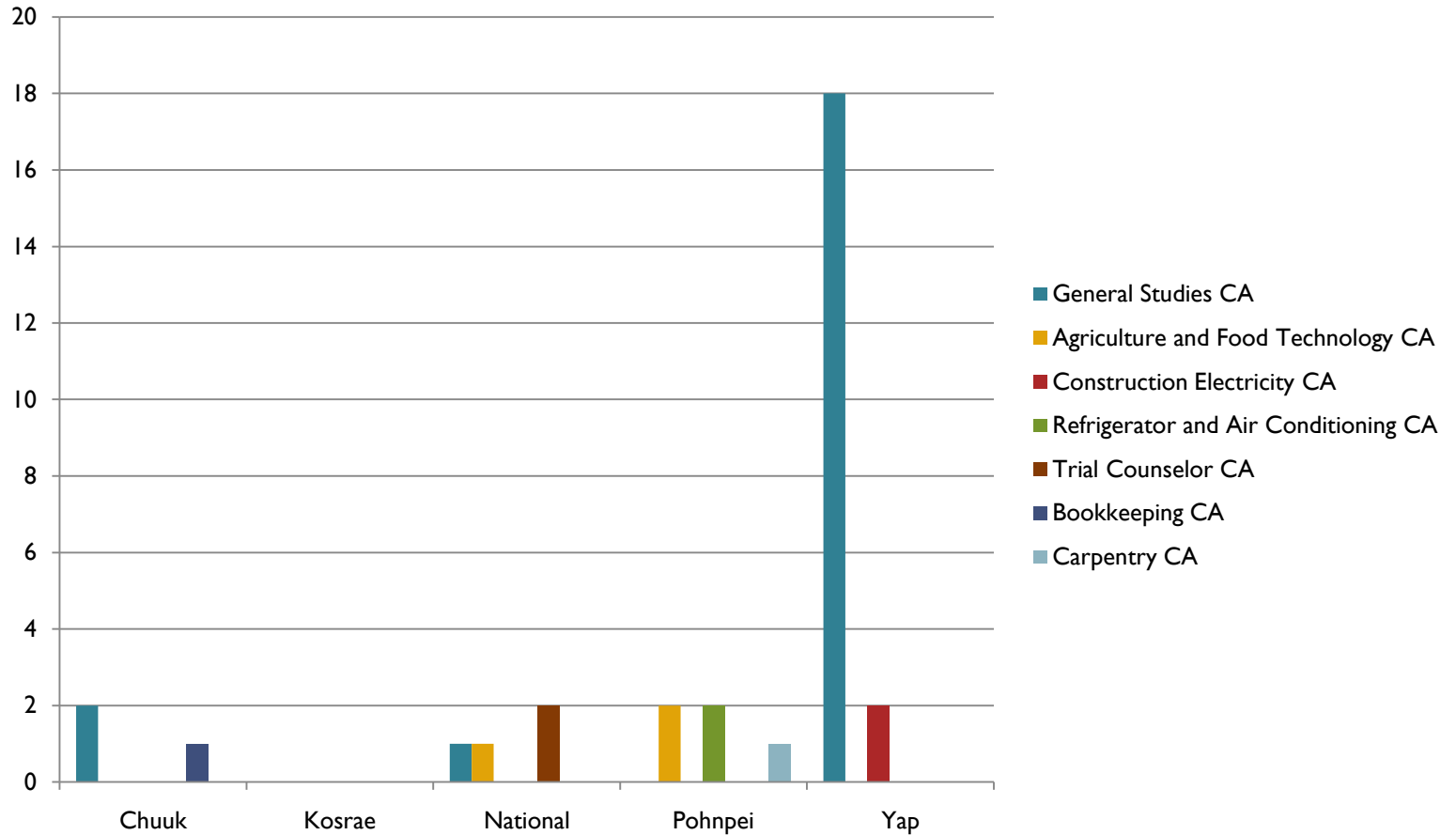
SY 09/10 Graduates AS Degree

SY 09/10 Graduates AS Degree



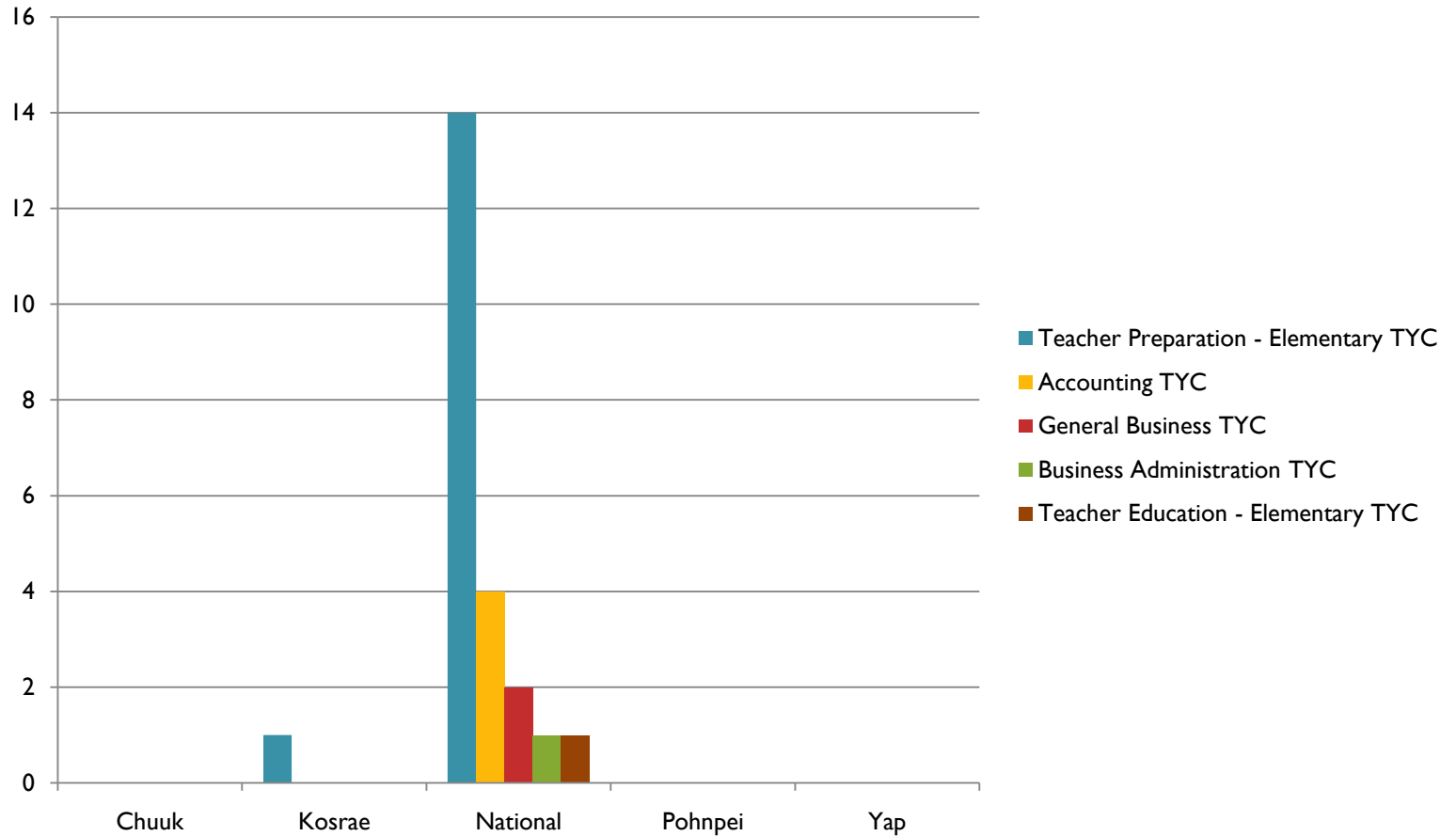
SY 09/10 Graduates CA

SY 09/10 Graduates CA



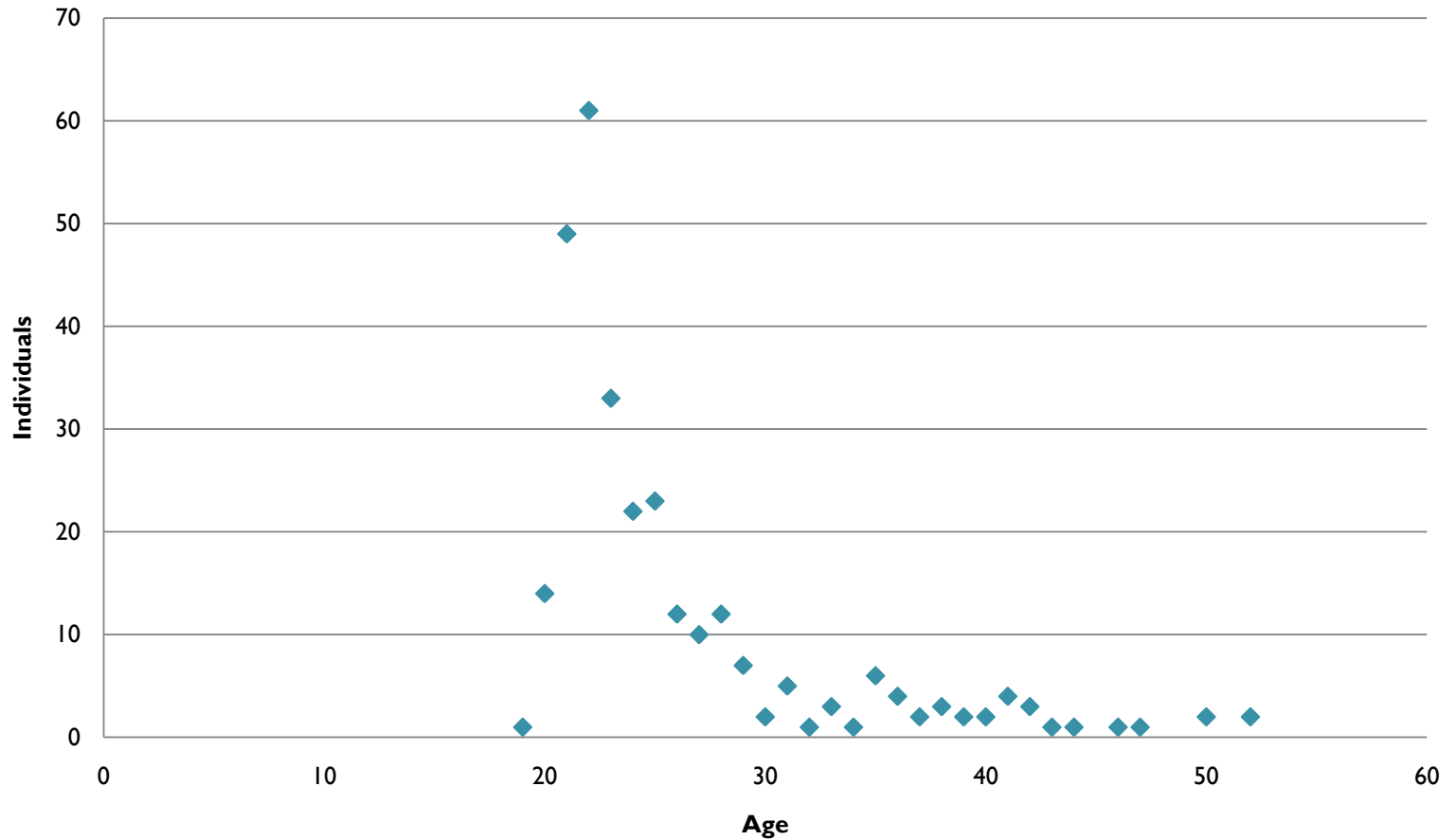
SY 09/10 Graduates TYC

SY 09/10 Graduates TYC



SY 09/10 Graduates Age Distribution

SY 09/10 Graduates Age Distribution



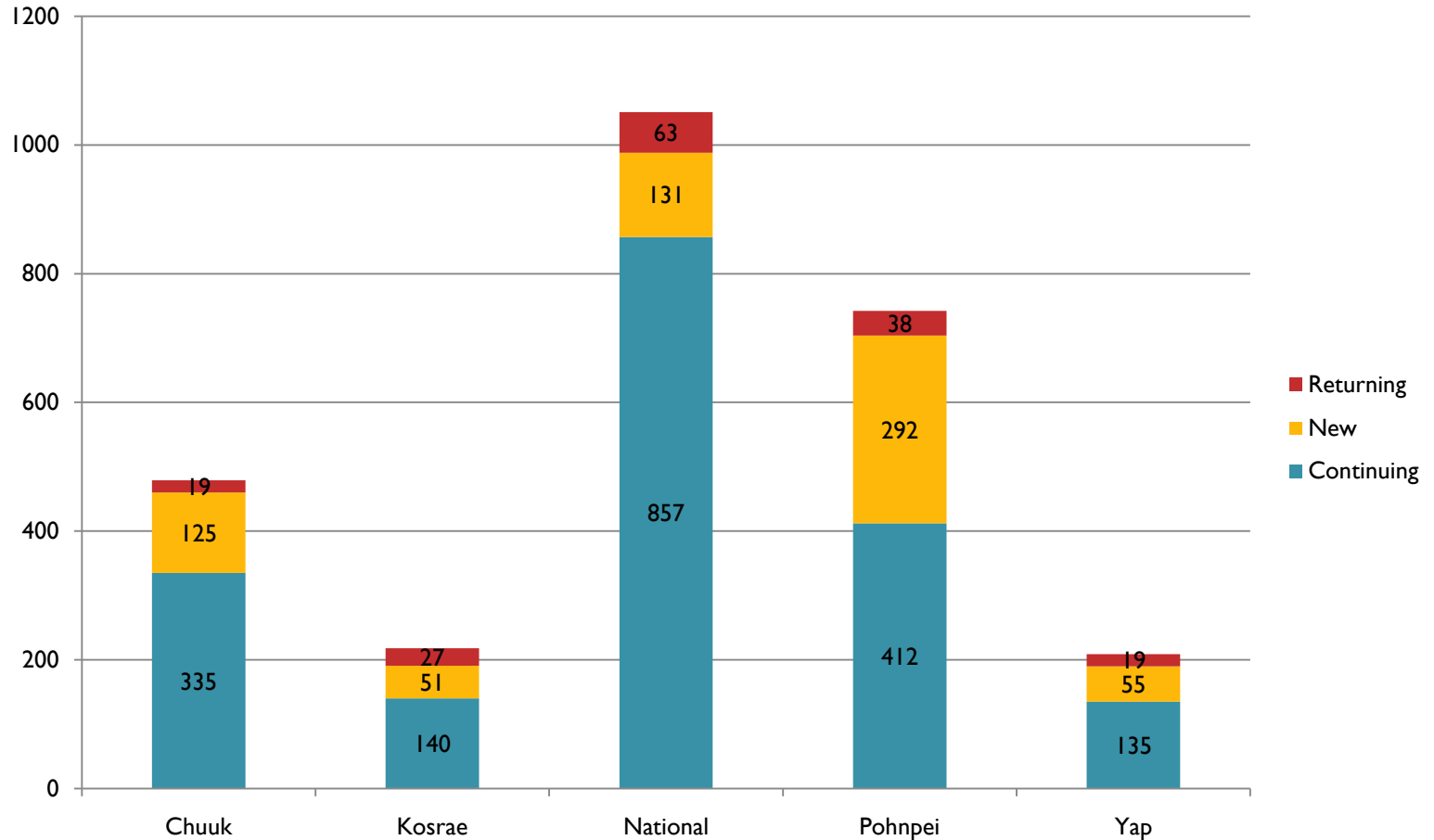
Fall 2010



STUDENT ENROLLMENT CURRENT SEMESTER

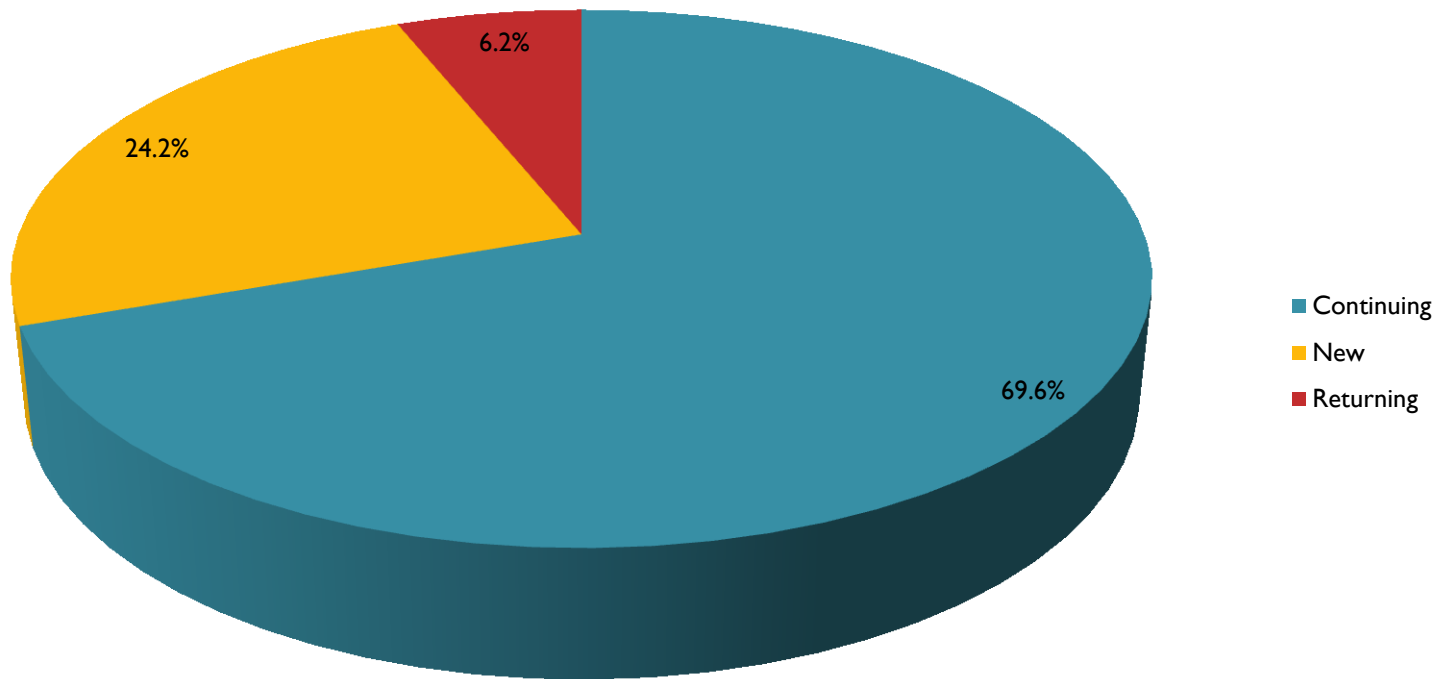
Fall 2010 Semester Enrollment by Campus

Fall 2010 Semester Enrollment by Campus

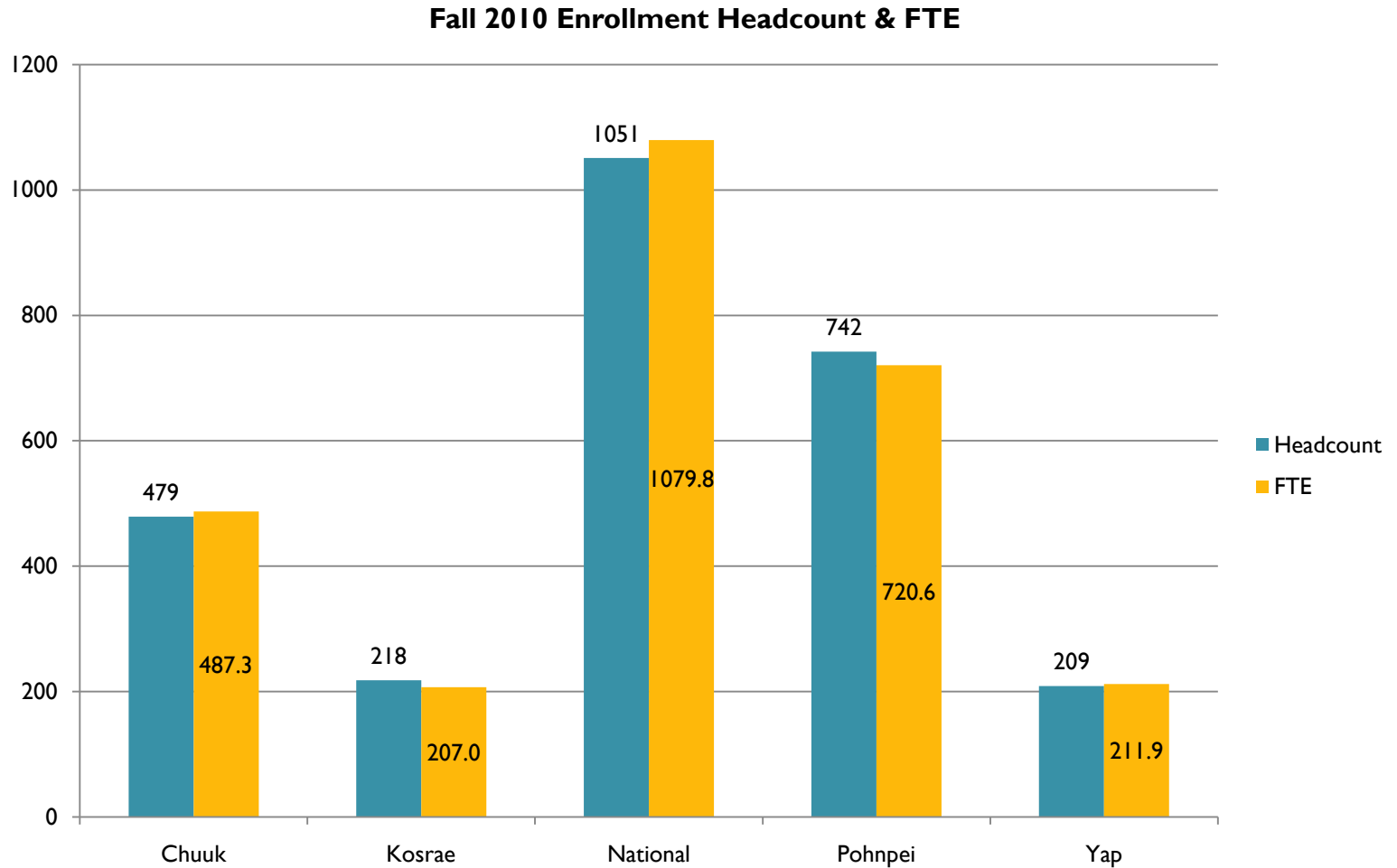


Fall 2010 Enrollment by Student Type

Fall 2010 Enrollment by Student Type

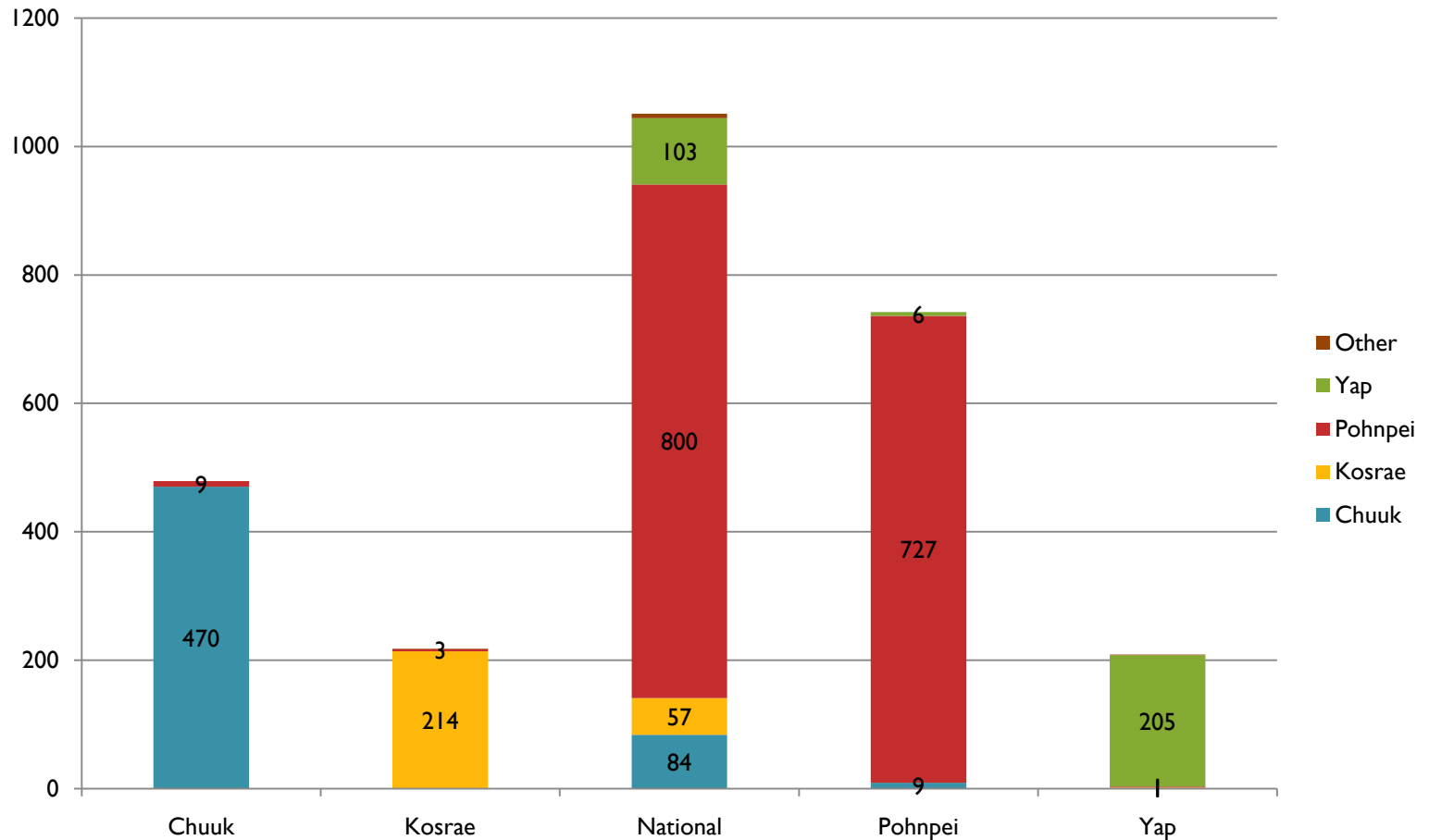


Fall 2010 Enrollment Headcount & FTE



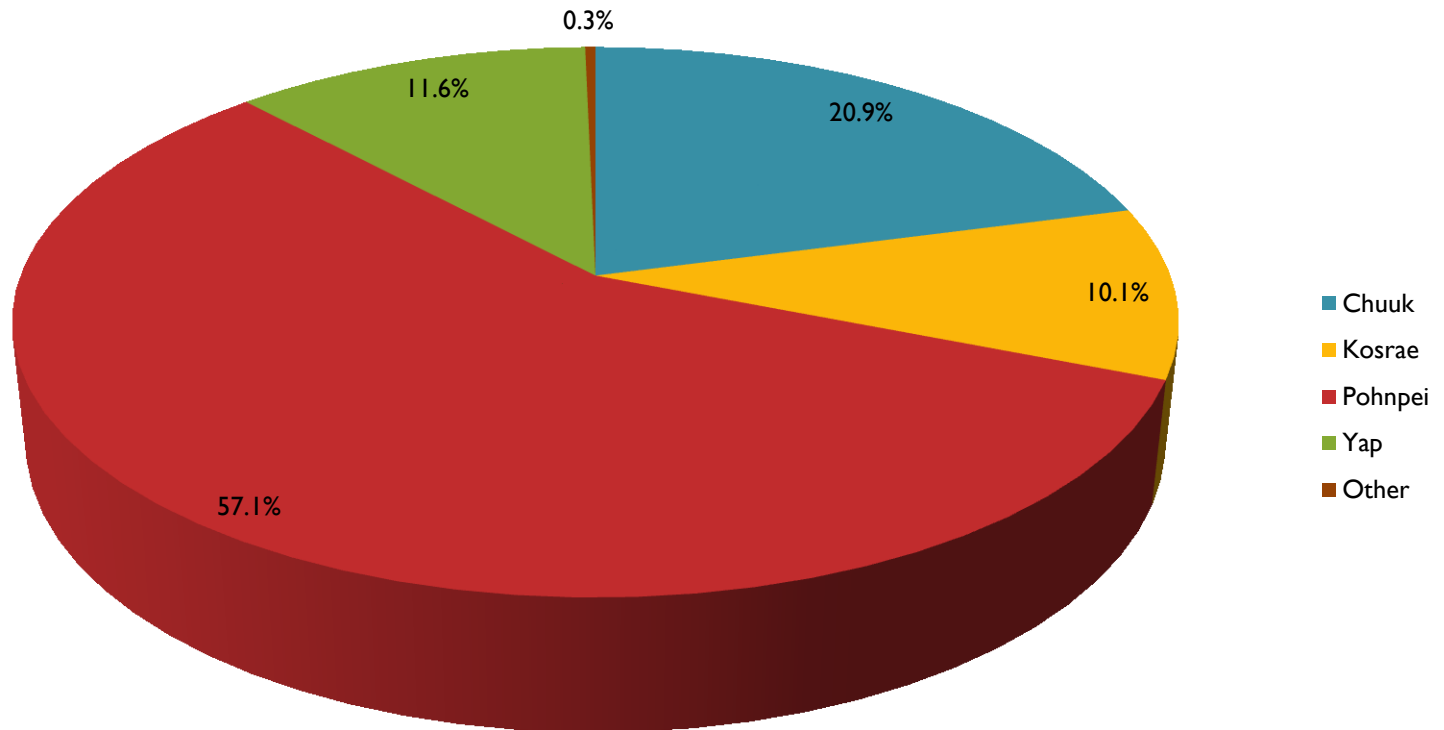
Fall 2010 Enrollment by Campus & State of Origin

Fall 2010 Enrollment by Campus & State of Origin



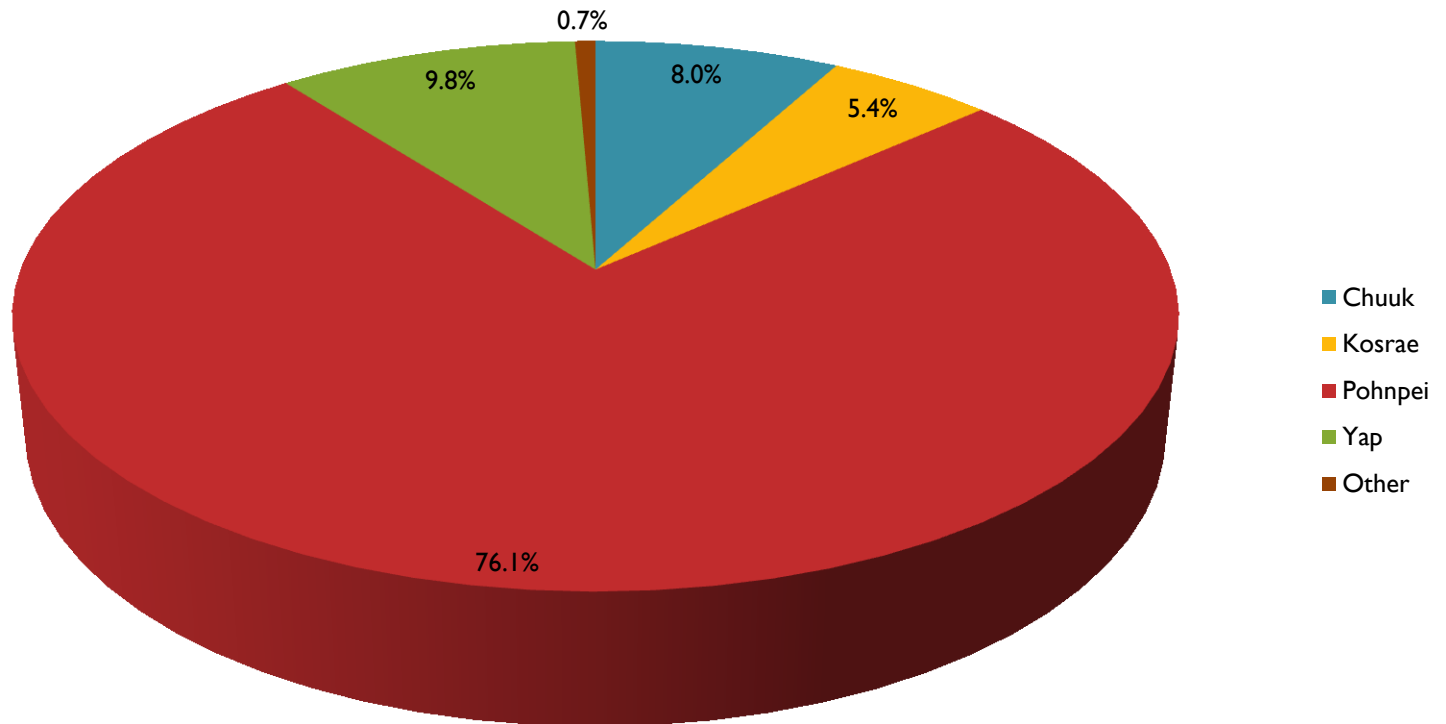
Fall 2010 Enrollment by State of Origin

Fall 2010 Enrollment by State of Origin



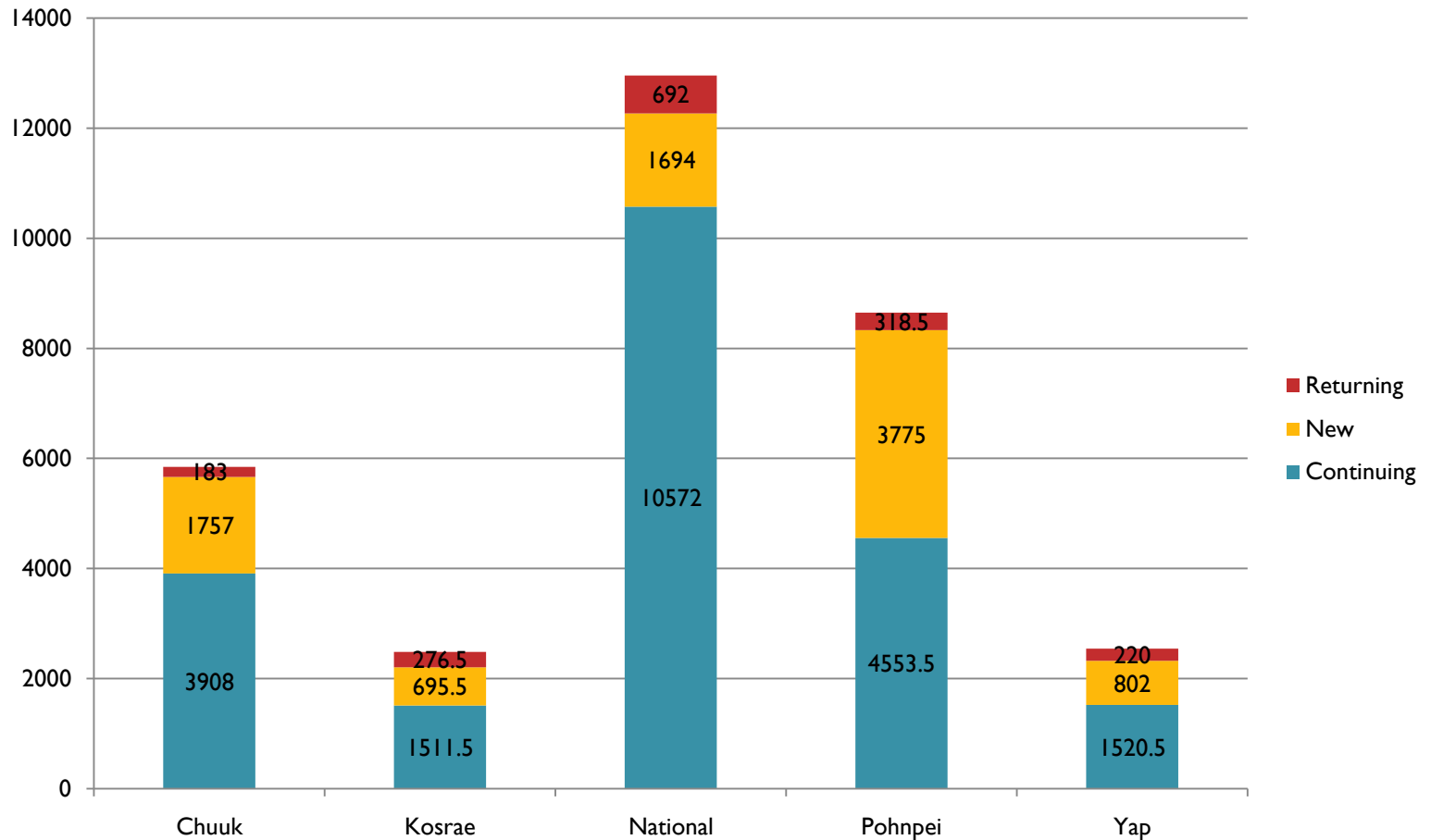
Fall 2010 Enrollment National Campus by State Origin

Fall 2010 Enrollment National Campus by State Origin



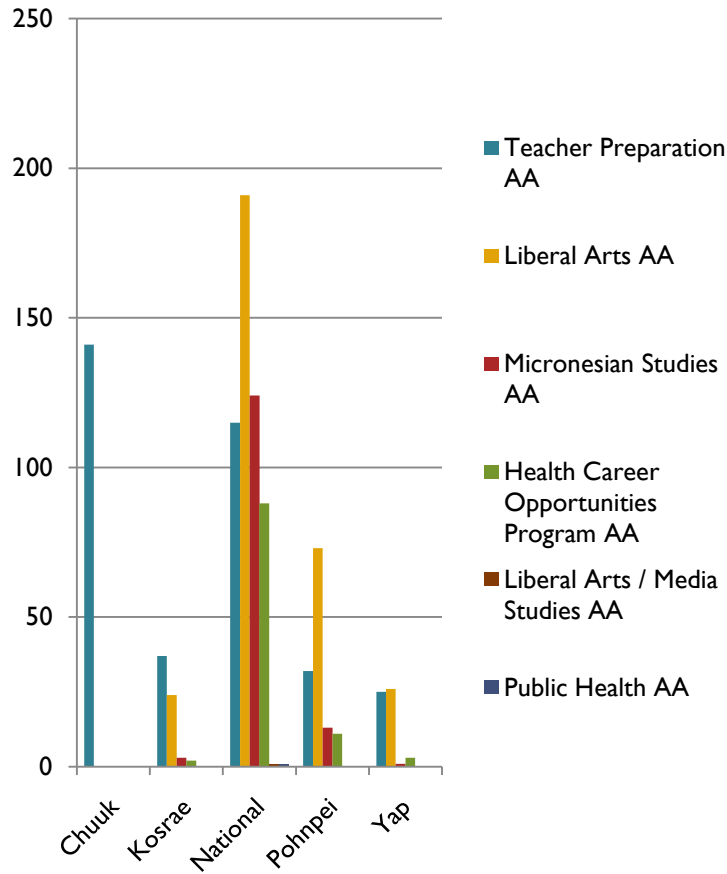
Fall 2010 Credits by Campus & Student Type

Fall 2010 Credits by Campus & Student Type

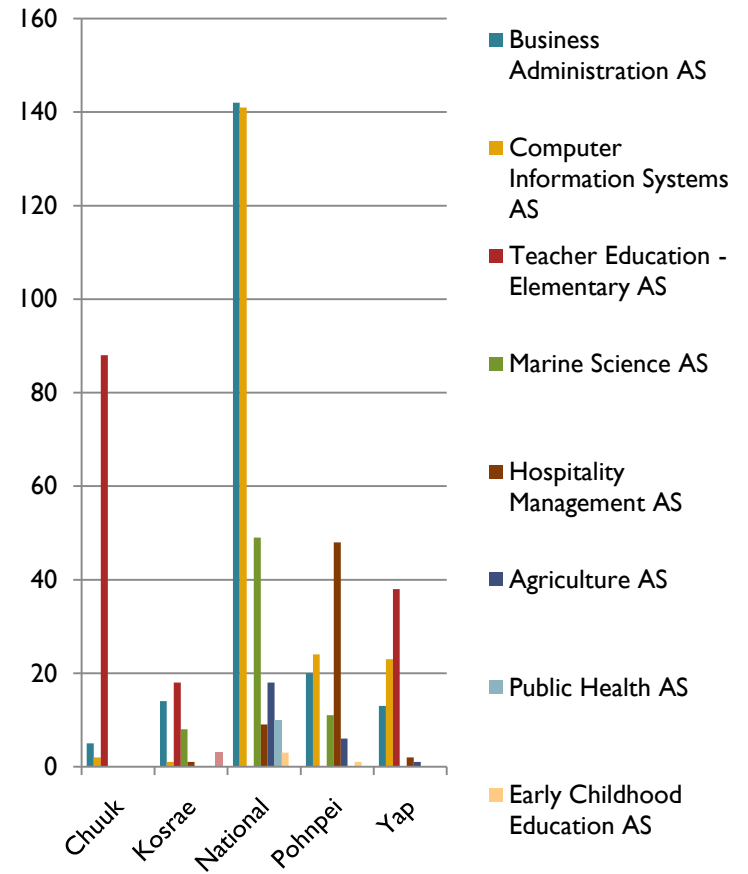


Fall 2010 Majors

Fall 2010 AA Majors

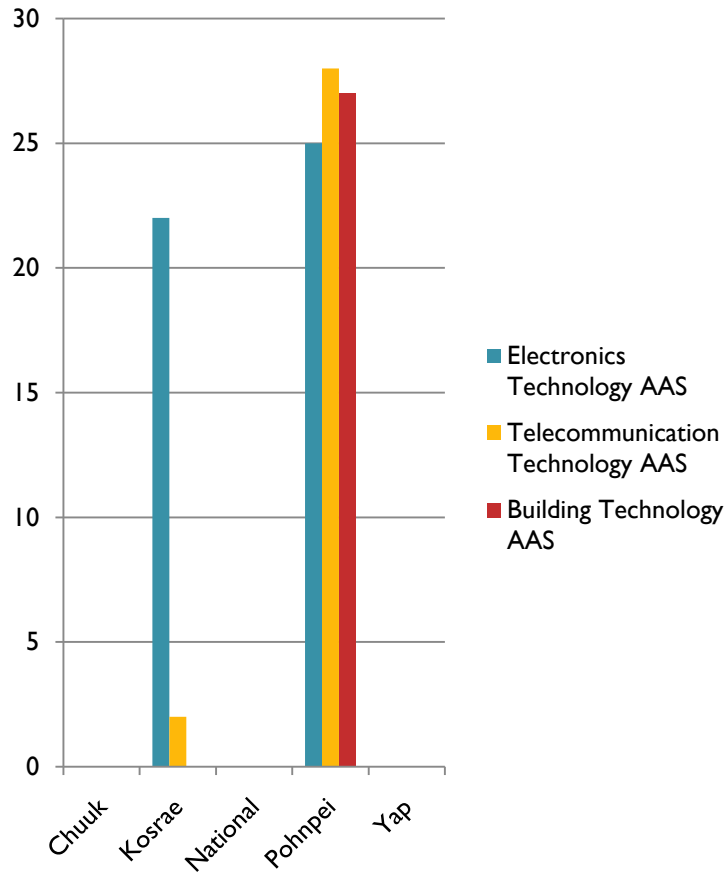


Fall 2010 AS Majors

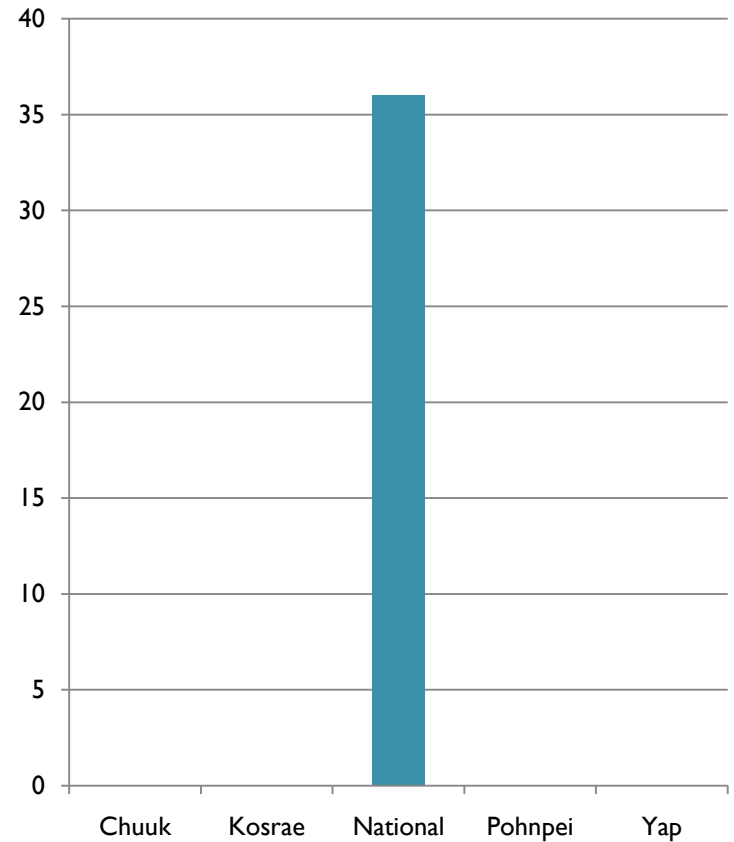


Fall 2010 Majors

Fall 2010 AAS Majors

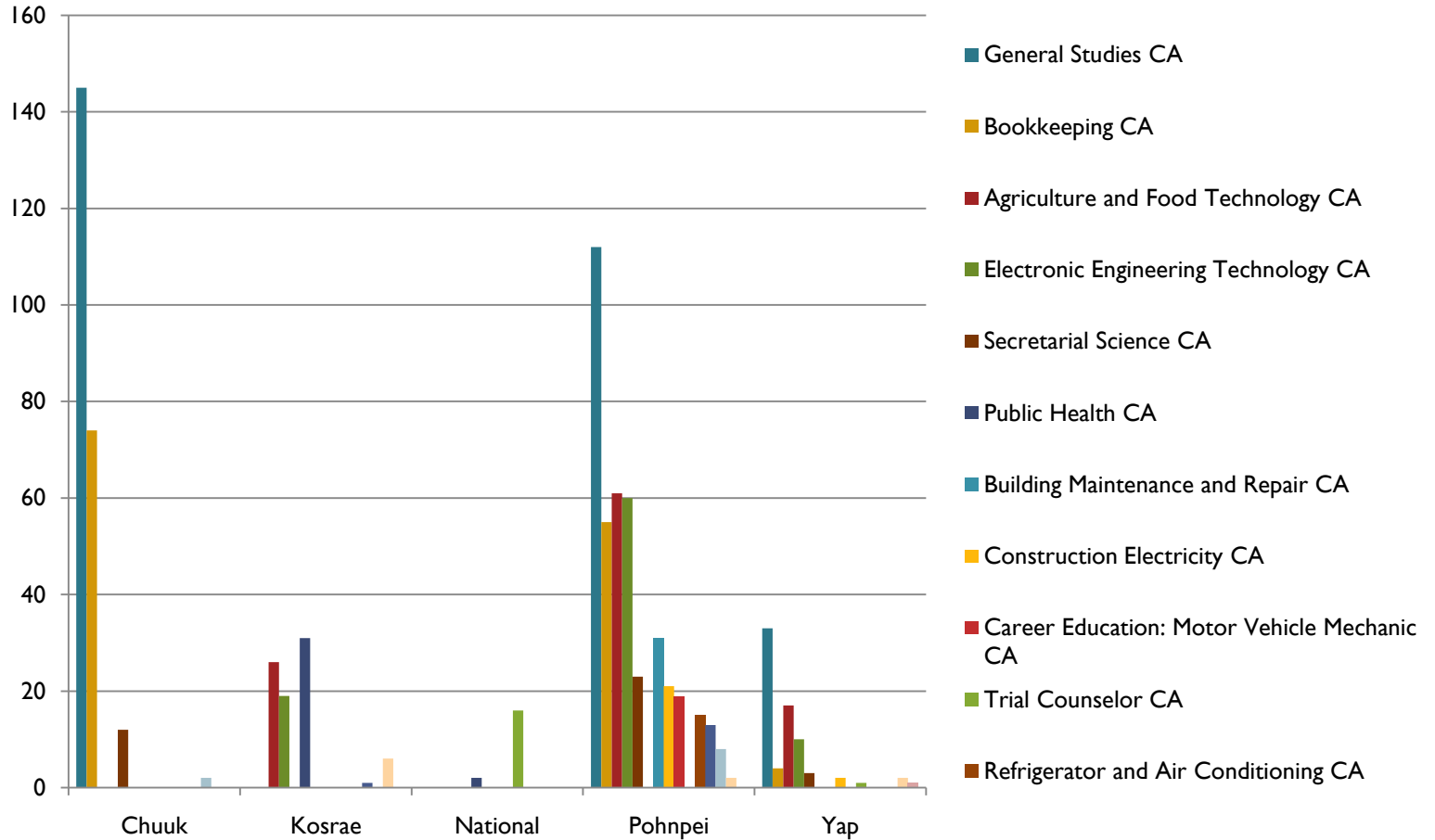


Fall 2010 BA Majors (Elementary Education)



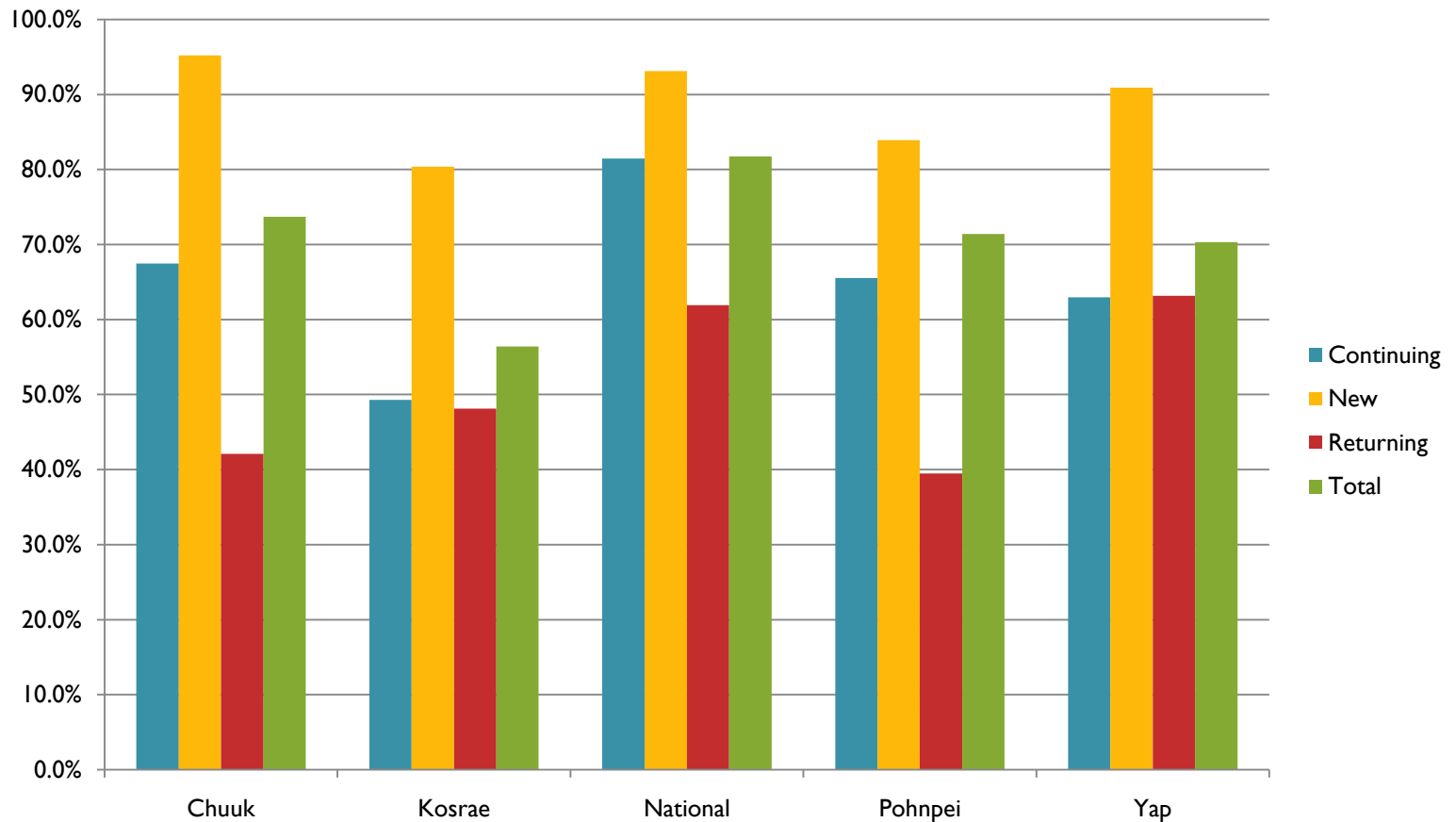
Fall 2010 CA Majors

Fall 2010 CA Majors



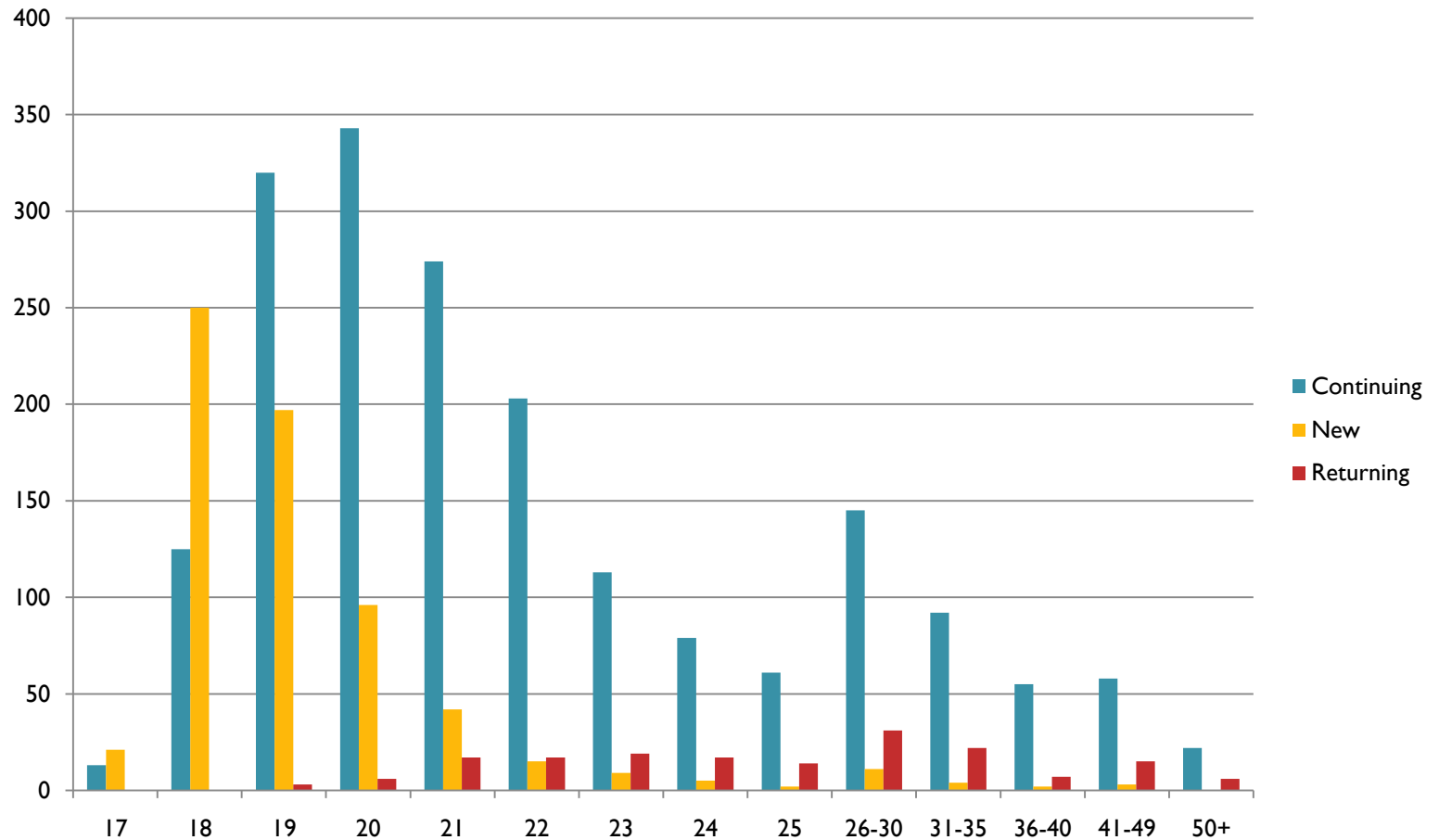
Fall 2010 Percent of Students Full Time By Student Type & Campus

Fall 2010 Percent of Students Full Time by Student Type & Campus



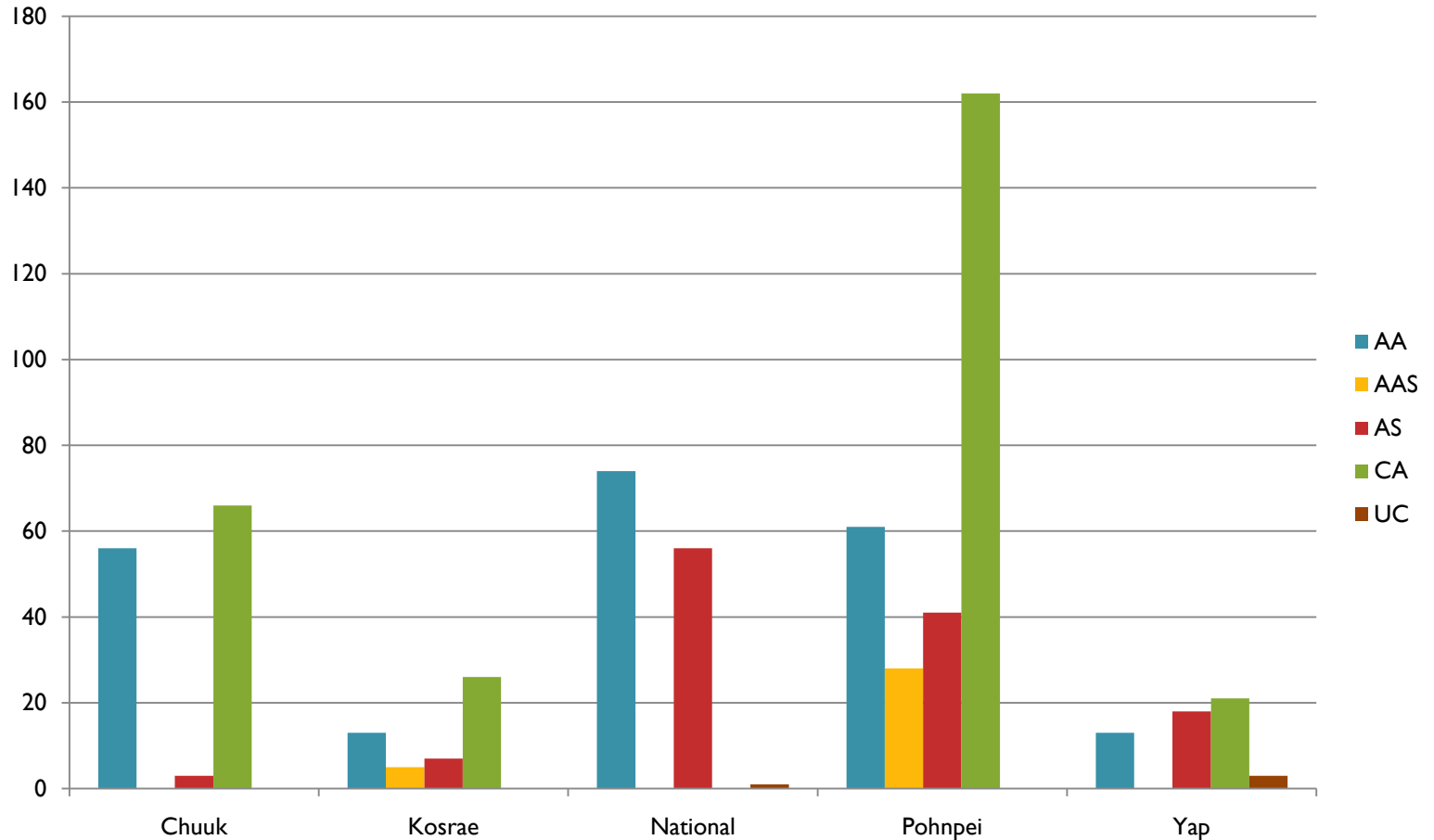
Fall 2010 Age Distribution by Student Type

Fall 2010 Age Distribution by Student Type



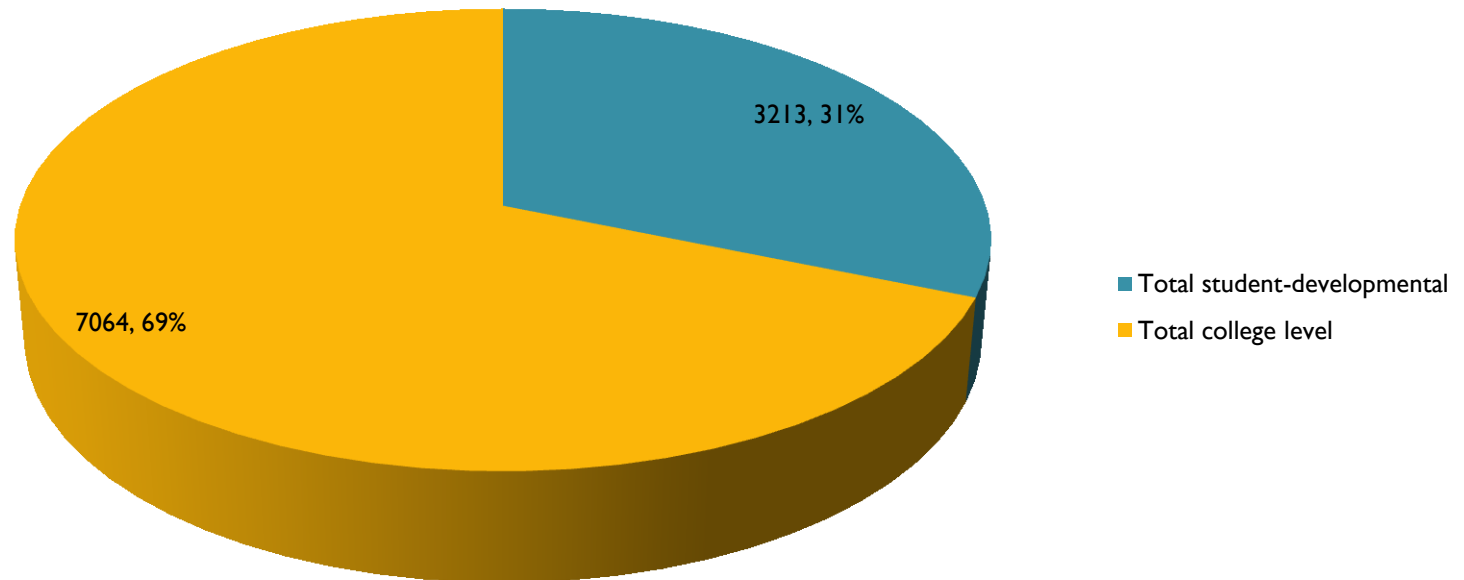
Fall 2010 New Students by Degree Type

Fall 2010 New Students by Degree Type



Fall 2010 Developmental vs. College Level Student Enrollment (by classes)

Fall 2010 Developmental vs. College Level Student-Enrollment



Fall 2009 to Fall 2010 Retention Rates by Campus

Fall 2009 to Fall 2010 Retention Rates by Campus

